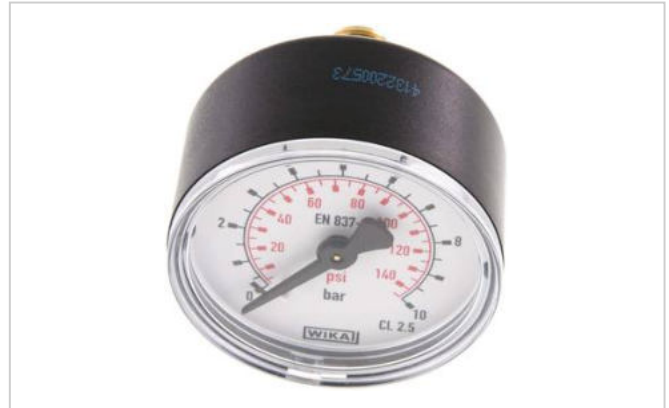


Data sheet

Pressure gauge horizontal (KU/Ms), 50mm, 0 to 10 bar, G 1/4"

Item number:

MW 1050



Example illustration

Item description

Materials:

Housing: black plastic, measuring system and connection: Cu alloy, window: transparent plastic

Connection thread:

G 1/4" * (Ø 40: G 1/8"), back-mounted, centred

Class:

2,5

Temperature range:

-20°C to +60°C

Dial:

1. Scale outside (black), display in bar, 2. scale inside (red), display in PSI

Protection class:

IP 42

Note:

WIKA Type 111.12

Optional:

Housing made of sheet steel, class 1.6 -**ST**, ISO factory calibration (following DIN EN 837-1, determination of measurement deviation and hysteresis), DAkkS-DKD calibration (in accordance with DKD-R 6-1, traceable and accredited in accordance with DIN EN ISO/IEC 17025, decision rule 4)

Properties

Diameter [mm]	50
Connection thread	G 1/4" *
Display range [bar]	0 - 10

Scale division [bar]	0,5
Version	Standard

Further information:

Weight	85 g / pcs
GTIN	4050571511364
Customs duty number	90262040
RoHS compliant	Yes
Manufacturer	Wika