

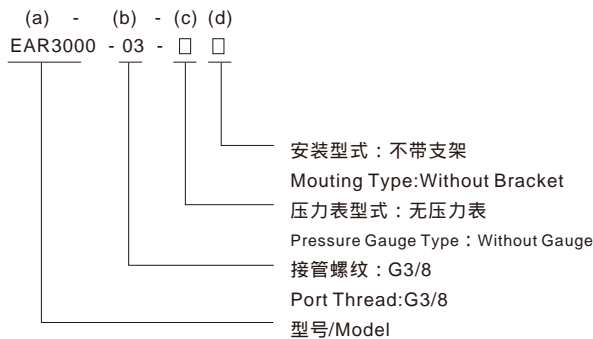
# EAR Series Regulator(R)



## Specification

型号Model	EAR1000/EAR2000	EER3000	EAR3000	EAR4000	EAR5000
最高使用压力/ Operating Pressure MPa	1.0				
允许耐压力/ Max Pressure MPa	1.5				
使用温度 / Operating Temperature	0-60				
设定压力范围/ Set Pressure MPa	0.05-0.85				
溢流压力/ Overflow Pressure MPa	设定压力/ Set Pressure + 0.05				
配管螺纹/ Port Thread G	1/8, 1/4	1/4, 3/8	1/4, 3/8, 1/2	3/8, 1/2 (3/8 螺合部选装时 3/4 For reduced part)	3/4, 1

## Product Code System



## Regulator

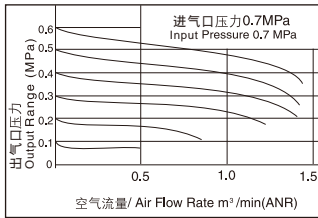
(a) 型号 Model	(b) 接管螺纹 Port Thread	最高使用压力 Operating Pressure (MPa)	调压范围 Set Pressure (MPa)	最大流量/ Max Air Flow * M <sup>3</sup> /min(ANR)
EAR1000-01	G1/8	1.0	0.05-0.85	0.6
EAR2000-02	G1/4			1.0
EER3000-02	G1/4			1.9
EER3000-03	G3/8			2.5
EAR3000-02	G1/4			2.1
EAR3000-03	G3/8			2.8
EAR3000-04	G1/2			3.5
EAR4000-03	G3/8			4.0
EAR4000-04	G1/2			5.0
EAR4000-06	G3/4			6.0
EAR5000-06	G3/4	8.0		
EAR5000-10	G1	8.0		

Operating temperature range: 0-60°C  
 \* At 0.7MPa supply pressure, 0.5MPa set pressure, 0.1 Mpa pressure drop

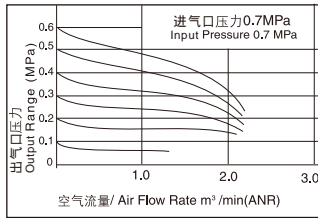
(a) 型号 Model	(b) 接管螺纹 Port Thread		(c) 压力表型式 Pressure Gauge Type		(d) 安装型式 Mounting Type	
EAR1000	01	G1/8	空白 Blank	无压力表 Without Gauge	空白 Blank	不带支架 Without Bracket
EAR2000	02	G1/4				
EER3000	02	G1/4				
EAR3000	03	G3/8	S	GS-27 方形压力表/ Square	B	C型支架 C-Bracket
	02	G1/4				
EAR4000	03	G3/8	R1	GR-40 圆形压力表/ Round	B3	L型支架 L-Bracket
	04	G1/2				
	03	G3/8				
EAR5000	04	G1/2	空白 Blank R2	无压力表 Without Gauge GR-50 圆形压力表/ Round	B3	L型支架 L-Bracket
	06	G3/4				
	06	G3/4				
	10	G1				

## Flow Diagrams

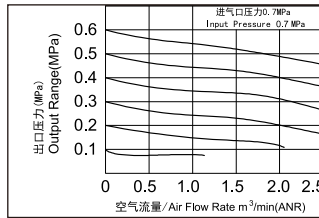
EAR1000-01



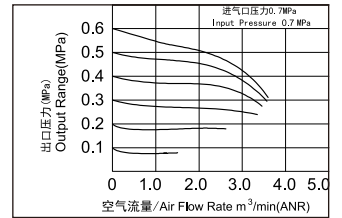
EAR2000-02



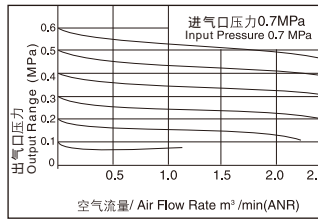
EER3000-02



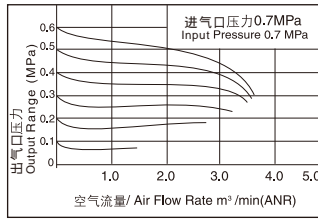
EER3000-03



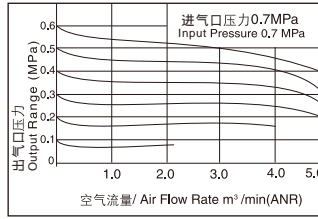
EAR3000-02



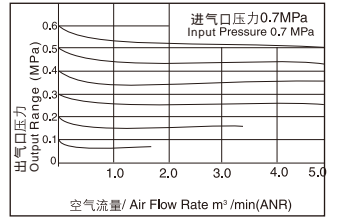
EAR3000-03



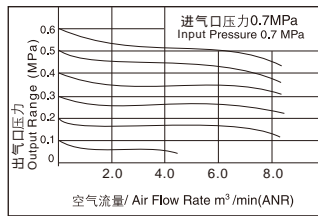
EAR4000-03



EAR4000-04



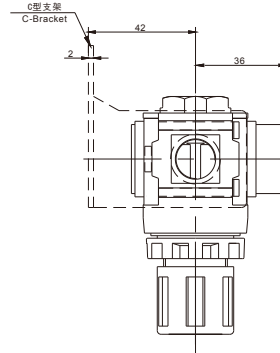
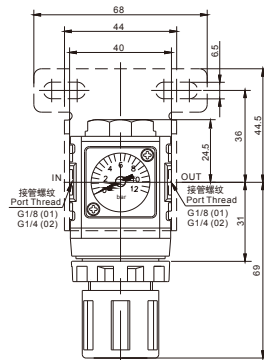
EAR5000-06/10



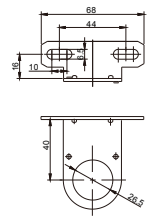
## Dimensions

EAR1000

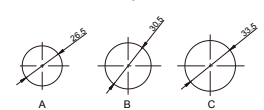
EAR2000



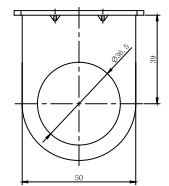
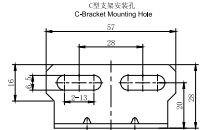
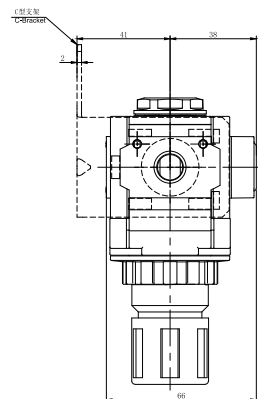
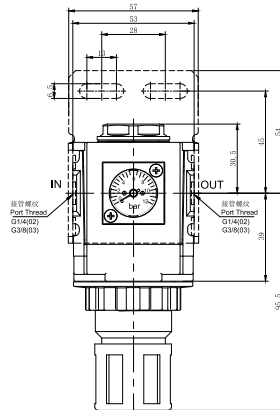
L型支架安装孔  
L-Bracket Mounting Hole



适用于面板安装孔  
Kneading board

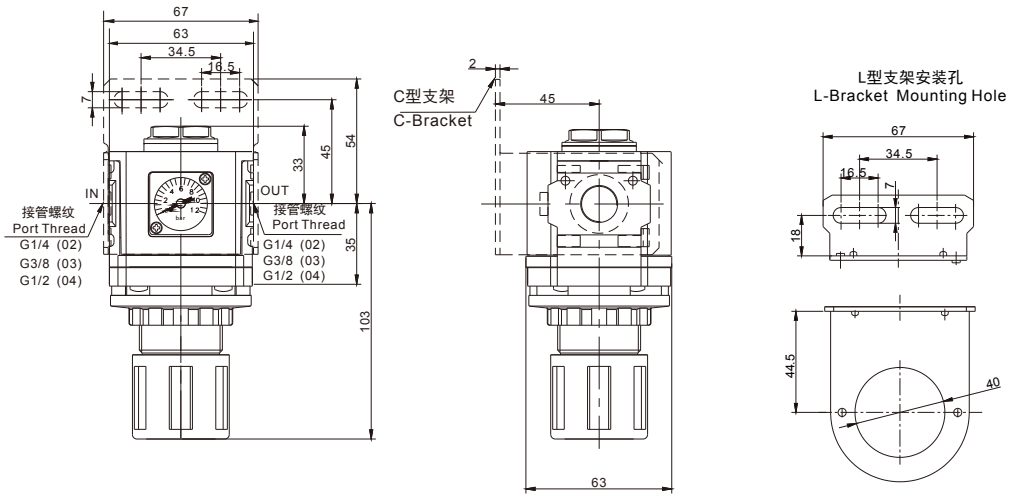


EER3000

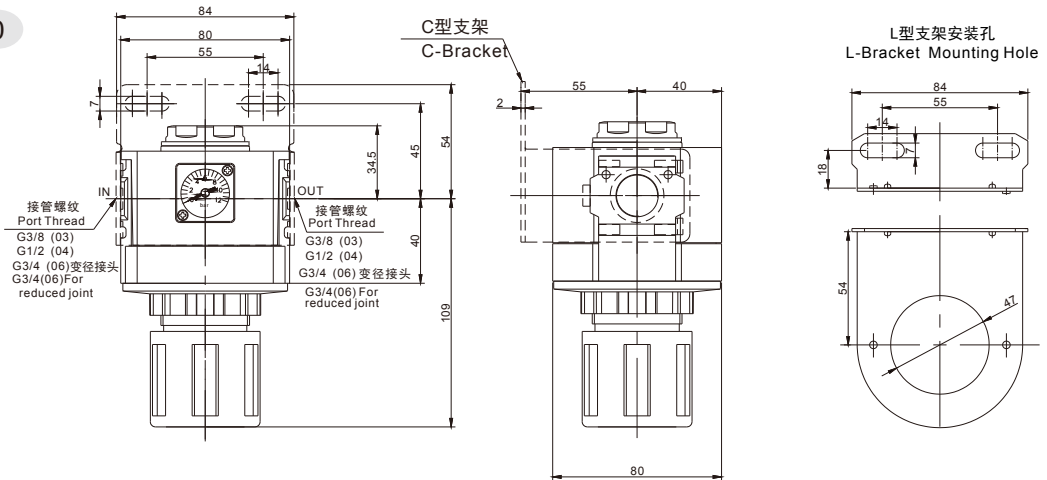


# Dimensions

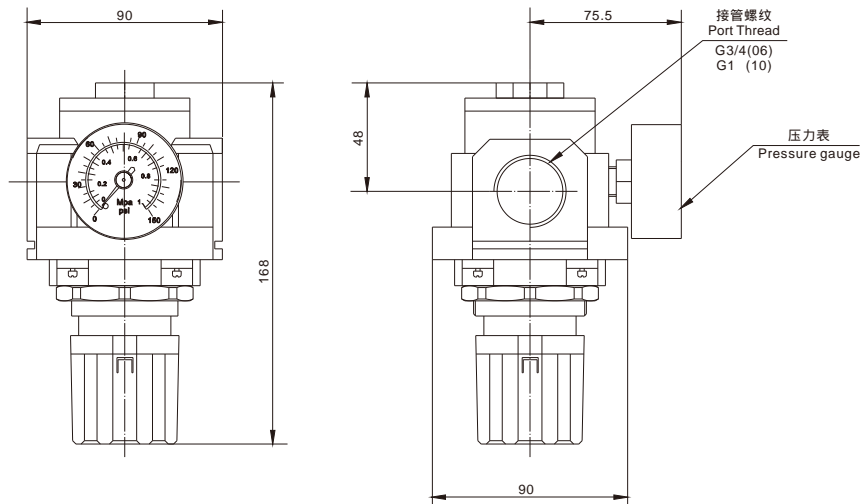
## EAR3000



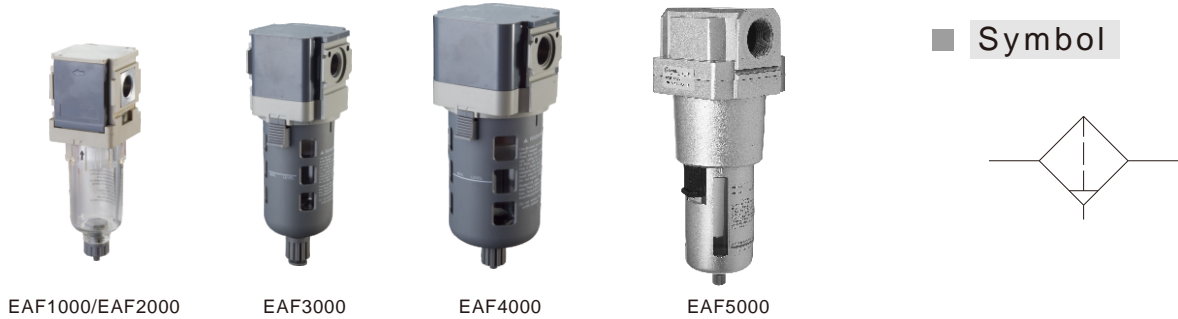
## EAR4000



## EAR5000



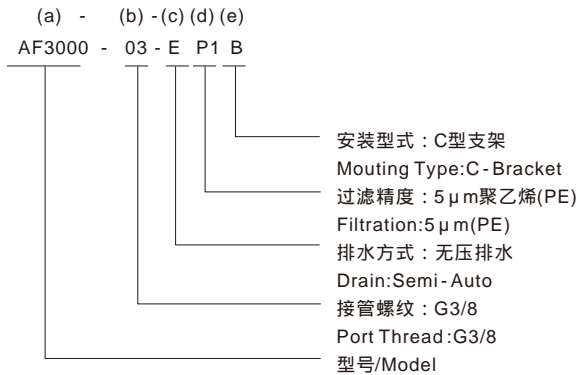
# EAF Series Filter (F)



## Specification

型号Model	EAF1000/EAF2000	EAF3000	EAF4000	EAF5000
高使用压力 / Operating Pressure MPa	1.0			
许耐压力 / Max Pressure MPa	1.5			
用温度 / Operating Temperature	0~60			
滤精度 / Filtration $\mu\text{m}$	5 或40/5 or 40			
水储存容量 / Waste Bowl Capacity $\text{cm}^3$	12	45	80	150
管螺纹 / Port Thread G	1/8、1/4	1/4、3/8、1/2	3/8、1/2 (3/4配合变径接头使用 / 3/4 For reduced joint)	3/4、1
注意事项 / Caution	注：确认物体上没有承受压力之后，再装卸杯子、杯子护罩 Note: 1.Assemble and disassemble the plastic bowl and bowl guard when it is confirmed that there's no load in control system.			

## Product Code System



## Filter

(a) 型号 Model	(b) 接管螺纹 Port Thread	最高使用压力 Operating Pressure (MPa)	最大流量 / Max Air Flow * $\text{M}^3/\text{min}$ (ANR)	过滤精度 Filtration ( $\mu\text{m}$ )
EAF1000-01	G1/8	1.0	0.5	5或40/ 5or40
EAF2000-02	G1/4		0.65	
EAF3000-02	G1/4		1.1	
EAF3000-03	G3/8		1.5	
EAF3000-04	G1/2		1.8	
EAF4000-03	G3/8		2.0	
EAF4000-04	G1/2		2.7	
EAF4000-06	G3/4		3.0	
EAF5000-06	G3/4		7.0	
EAF5000-10	G1		7.0	

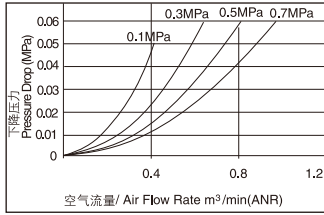
Operating temperature range:0~60  
\* At 0.7MPa set pressure,0.02MPa pressure drop

(a) 型号 Model	(b) 接管螺纹 Port Thread		(c)排水方式 Drain		(d) 过滤精度 Filtration		(e)安装型式 Mouting Type	
EAF1000	01	G1/8	空白 Blank	手动排水 Manual 无压排水 Semi - Auto	P1	5 $\mu\text{m}$ 聚乙烯(PE)	空白 Blank	不带支架 WithoutBracket
EAF2000	02	G1/4						
EAF3000	02	G1/4	空白 Blank	手动排水 Manual	P2	5 $\mu\text{m}$ 烧结铜(CU)		
	03	G3/8						
EAF4000	04	G1/2	E	无压排水 Semi - Auto	P3	40 $\mu\text{m}$ 聚乙烯(PE)		
	03	G3/8						
	04	G1/2						
EAF5000	06	G3/4	A	自动排水 Auto	P4	40 $\mu\text{m}$ 烧结铜(CU)	B	C型支架 C - Bracket
	10	G1						

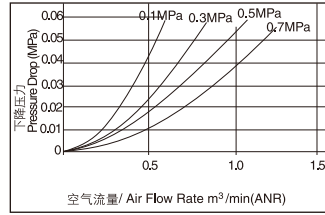


## Flow Diagrams

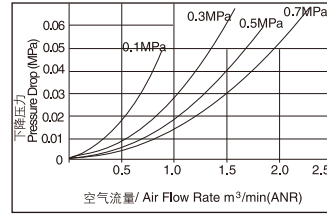
EA F1000-01



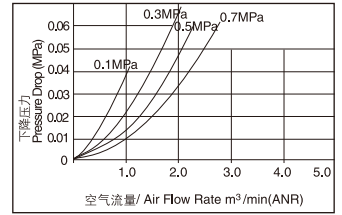
EA F2000-02



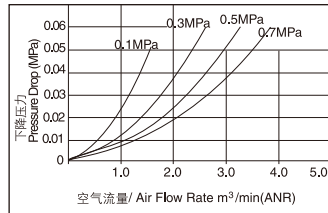
EA F3000-02



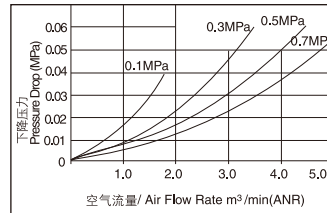
EA F3000-03



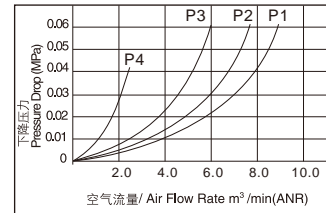
EA F4000-03



EA F4000-04



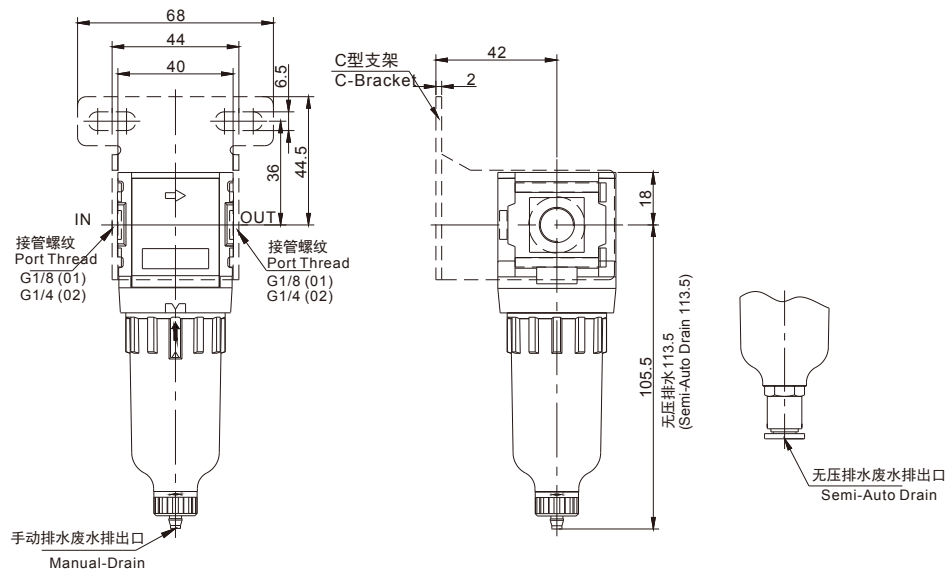
EA F5000-06/10



## Dimensions

EA F1000

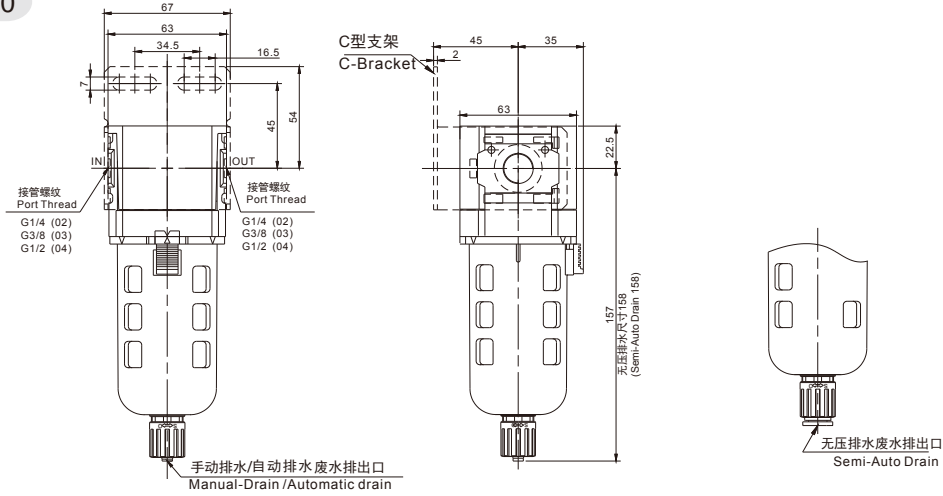
EA F2000



Note: Manual drain can insert ID 4 PU tube at drain outlet. Semi - Auto drain can insert OD 6 PU tube at drain outlet.

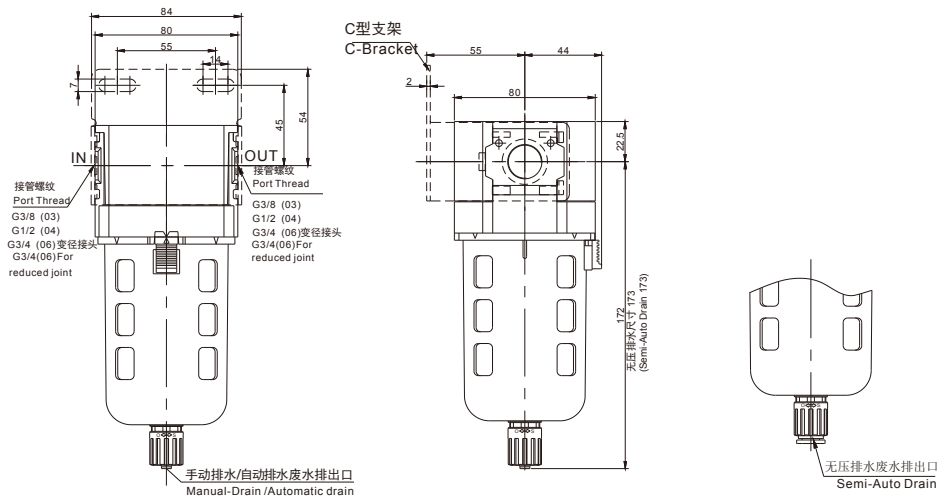
## Dimensions

### EAF3000



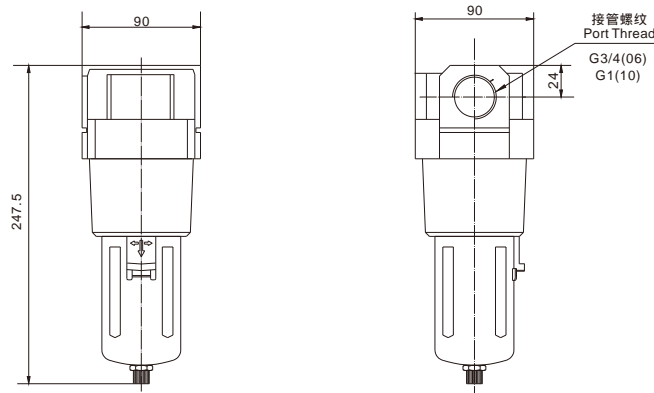
Note: Manual drain or automatic drain can insert ID 5.5 PU tube at drain outlet. Semi - Auto drain can insert OD 8PU tube at drain outlet.

### EAF4000



Note: Manual drain or automatic drain can insert ID 5.5 PU tube at drain outlet. Semi - Auto drain can insert OD 8 PU tube at drain outlet.

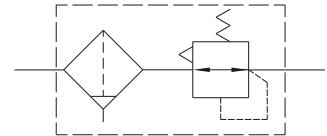
### EAF5000



# EAW Series Filter Regulator



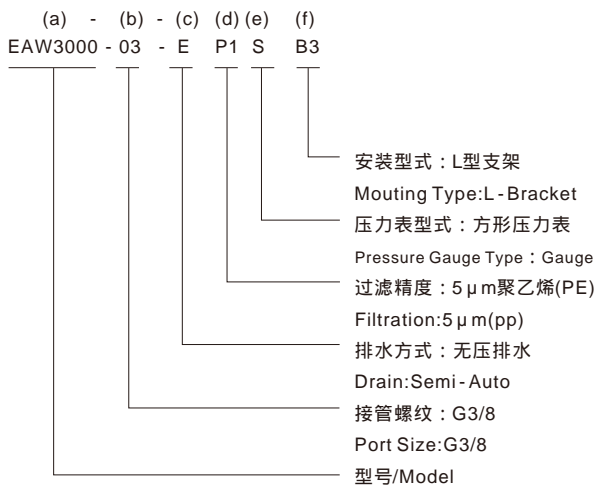
## Symbol



## Specification

型号Model	EAW1000/EAW2000	EEW3000	EAW3000	EAW4000	EAW5000
最高使用压力/ Operating Pressure MPa	1.0				
允许耐压力/ Max Pressure MPa	1.5				
使用温度 / Operating Temperature	0-60				
过滤精度/ Filtration $\mu\text{m}$	5 或40/5 或 40				
设定压力范围/ Set Pressure MPa	0.05-0.85				
溢流压力/ Overflow Pressure MPa	设定压力/ Set Pressure +0.05				
废水储存容量 / Waste Bowl Capacity $\text{cm}^3$	12	40	45	80	150
接管螺纹 / Port Thread G	1/8、1/4	1/4、3/8	1/4、3/8、1/2	3/8、1/2 (1/4配合接头使用 1/4 For reduced joint)	3/4、1
注意事项/ Caution	注：确认系统内没有承受压力之后，再拆卸杯子、杯子护罩； Note: Assemble and disassemble the Plastic bowl and bowl guard when it is confirmed that there's no load in control system.				

## Product Code System



## Filter Regulator

(a) 型号 Model	(b) 接管螺纹 Port Thread	最高使用压力 Operating Pressure (MPa)	调压范围 Set Pressure (MPa)	最大流量/ Max Air Flow * $\text{M}^3/\text{min}$ (ANR)
EAW1000-01	G1/8	1.0	0.05~0.85	0.8
EAW2000-02	G1/4			1.2
EEW3000-02	G1/4			2
EEW3000-03	G3/8			2.25
EAW3000-02	G1/4			2.2
EAW3000-03	G3/8			2.5
EAW3000-04	G1/2			3.0
EAW4000-03	G3/8			3.5
EAW4000-04	G1/2			4.5
EAW4000-06	G3/4			5.0
EAW5000-06	G3/4	5.0		
EAW5000-10	G1	5.0		

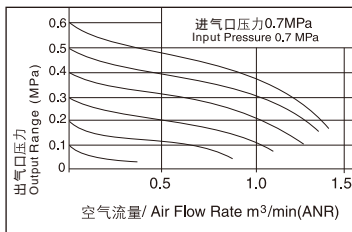
Operating temperature range: 0-60  
 \* At 0.7MPa supply pressure, 0.5MPa set pressure, 0.1 Mpa pressure drop

## Combination

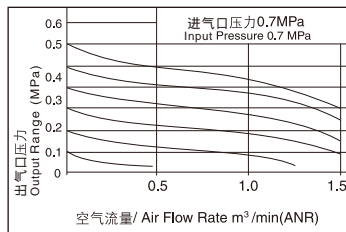
(a) 型号 Model	(b) 接管螺纹 Port Thread		(c) 排水方式 Drain		(d) 过滤精度 Filtration		(e) 压力表型式 Pressure Gauge Type		(f) 安装型式 Mounting Type	
EAW1000	01	G1/8	空白 Blank	手动排水 Manual	P1	5 μm 聚乙烯 (PE)	空白 Blank	无压力表 Without Gauge	空白 Blank	不带支架 Without Bracket
EAW2000	02	G1/4								
EEW3000	02	G1/4	E	无压排水 Semi-Auto	P2	40 μm 聚乙烯 (PE)	S	GS-27 方形压力表/Square	B3	L型支架 L-Bracket
	03	G3/8								
EAW3000	02	G1/4	空白 Blank	手动排水 Manual	P3	5 μm 烧结铜 (CU)	R1	GR-40 圆形压力表/Round	B	C型支架 C-Bracket
	03	G3/8								
	04	G1/2								
EAW4000	03	G3/8	E	无压排水 Semi-Auto	P4	40 μm 烧结铜 (CU)	R1	GR-40 圆形压力表/Round	B	C型支架 C-Bracket
	04	G1/2								
	06	G3/4								
EAW5000	06	G3/4	A	自动排水 Auto	P4	40 μm 烧结铜 (CU)	空白 Blank	无压力表 Without Gauge	B3	L型支架 L-Bracket
	10	G1								

## Flow Diagrams

EAW1000-01

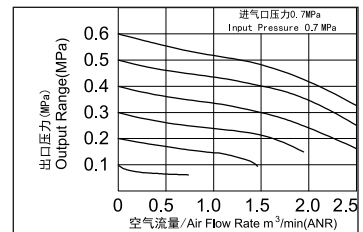


EAW2000-02

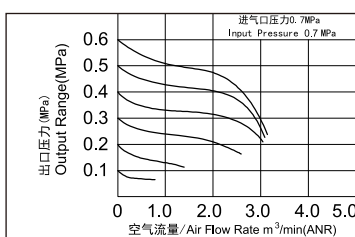


EEW3000-02

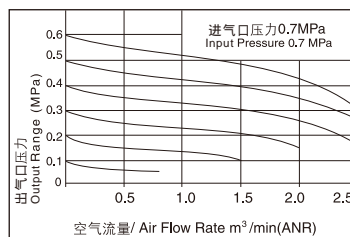
EEW3000-02



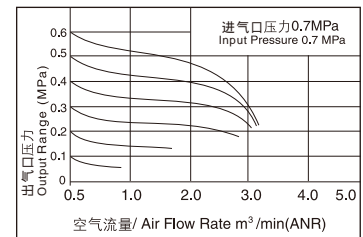
EEW3000-03



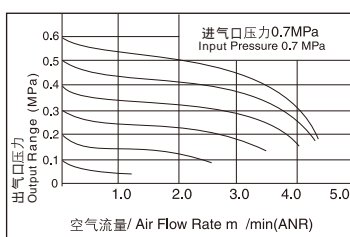
EAW3000-02



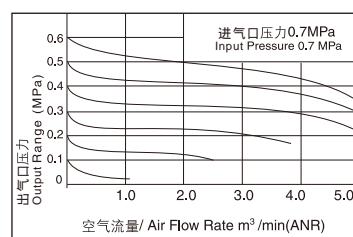
EAW3000-03



EAW4000-03



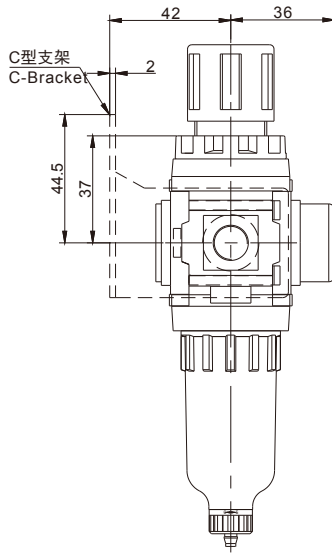
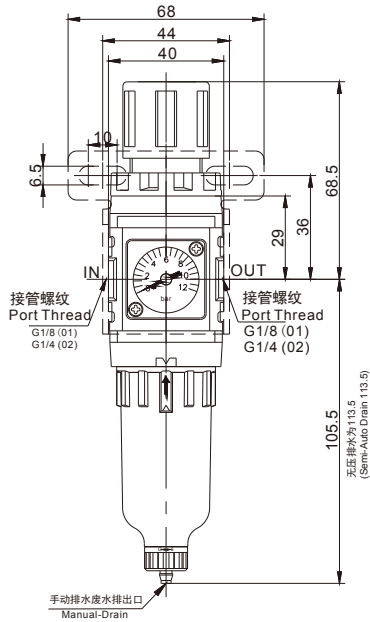
EAW4000-04



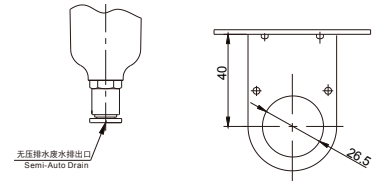
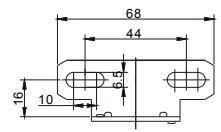
# Dimensions

EAW1000

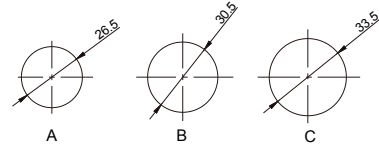
EAW2000



L型支架安装孔  
L-Bracket Mounting Hole

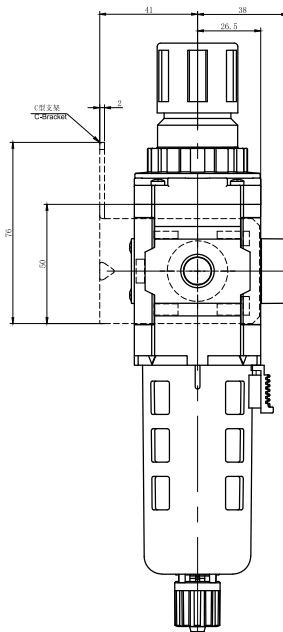
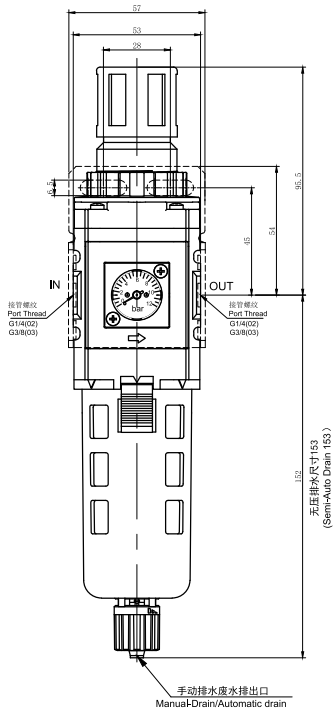


适用于面板安装孔  
Kneading board

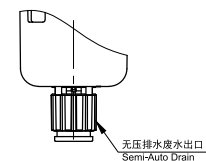
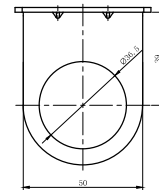
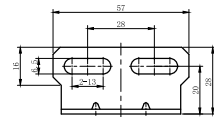


Note: Manual drain can insert ID 4 PU tube at drain outlet. Semi-Auto drain can insert OD 6 PU tube at drain outlet.

EEW3000



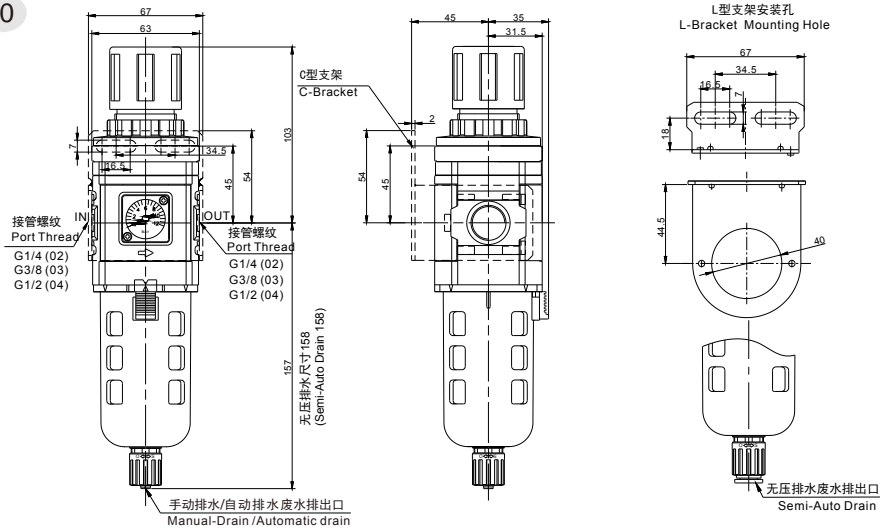
C型支架安装孔  
C-Bracket Mounting Hole



Note: Manual drain can insert ID 4 PU tube at drain outlet. Semi-Auto drain can insert OD 6 PU tube at drain outlet.

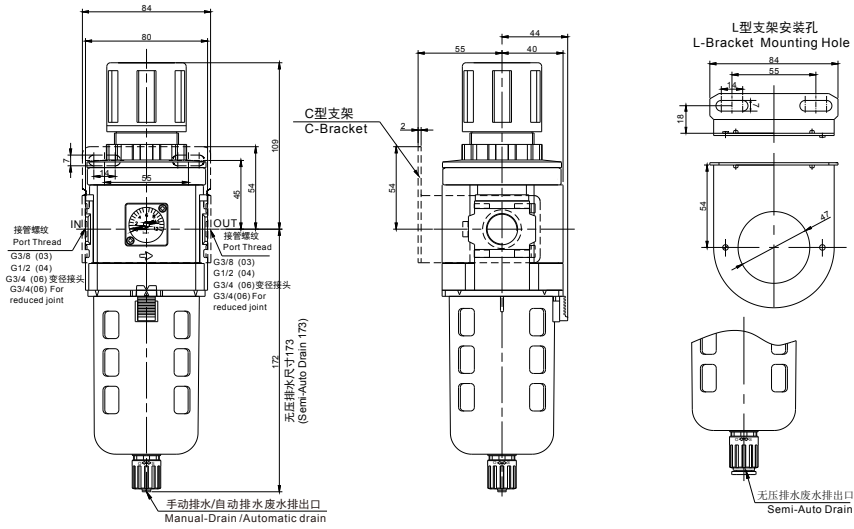
## Dimensions

### EAW3000



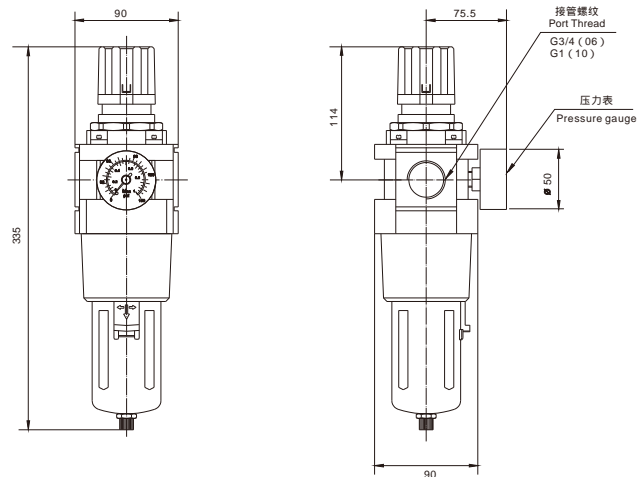
Note: Manual drain or automatic drain can insert ID 5.5 PU tube at drain outlet. Semi - Auto drain can insert OD 8 PU tube at drain outlet.

### EAW4000



Note: Manual drain or automatic drain can insert ID 5.5 PU tube at drain outlet. Semi - Auto drain can insert OD 8 PU tube at drain outlet.

### EAW5000



# EAL Series Lubricator(L)



EAL1000/EAL2000



EEL3000



EAL3000

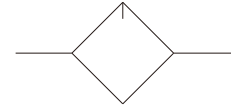


EAL4000



EAL5000

## Symbol



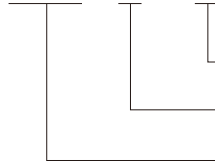
## Specification

型号Model	EAL1000/EAL2000	EEL3000	EAL3000	EAL4000	EAL5000
最高使用压力 / Operating Pressure MPa	1.0				
允许耐压力 / Max Pressure MPa	1.5				
使用温度 / Operating Temperature	0-60				
最少滴液流量 / Min Flow For Oil Drop m <sup>3</sup> /min(ANR)	0.015	0.03	0.03	0.065	0.19
储油量 / Max Oil Level ml	20	70	85	170	140
使用油 / Oil Recommended	1级涡轮机油 / Turbine Oil NO.1 (ISO VG 32) (不可使用锭子油 / NO Spindle oil is allowed)				
配管螺纹 / Port Thread G	1/8、1/4	1/4、3/8	1/4、3/8、1/2	3/8、1/2 (3/4配合变径接头使用 3/4 For reduced joint)	G3/4, G1
注意事项 / Caution	注：1、确认系统内没有承受压力之后，再拆卸杯子、杯子护罩； 2、最少滴液流量是指在设定压力为0.5MPa(5.1kgf/cm <sup>2</sup> )的基础上，每分钟5滴涡轮油的滴液流量 Note: 1. Assemble and disassemble the plastic bowl and bowl guard when it is confirmed that there's no load on the object. 2. The minimum drop flow refers to the drop flow of 5 turbine oil every minute on the basis of the pressure set at 0.5MPa				

## Product Code System

(a) - (b) - (c)

EAL3000 - 03 - B



安装型式：C型支架  
 Mounting Type: C-Bracket  
 接管螺纹：G3/8  
 Port Thread: G3/8  
 型号/Model

## Lubricator Series

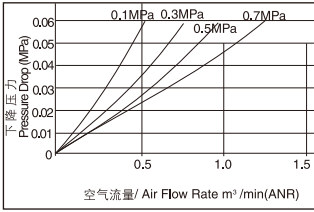
(a) 型号 Model	(b) 接管螺纹 Port Thread	最高使用压力 Operating Pressure (MPa)	最大流量 / Max Air Flow * M <sup>3</sup> /min(ANR)	储油量 Max Oil Level (cm <sup>3</sup> )
EAL1000-01	G1/8	1.0	0.5	20
EAL2000-02	G1/4		0.6	
EEL3000-02	G1/4		1.1	70
EEL3000-03	G3/8		1.6	
EAL3000-02	G1/4		1.2	85
EAL3000-03	G3/8		1.8	
EAL3000-04	G1/2		2.0	
EAL4000-03	G3/8		2.3	
EAL4000-04	G1/2		2.6	170
EAL4000-06	G3/4		2.9	
EAL5000-06	G3/4	7.0	140	
EAL5000-10	G1	7.0		

Operating temperature range: 0-60  
 \* At 0.7MPa Input pressure, 0.5MPa set pressure, 0.1 Mpa pressure drop

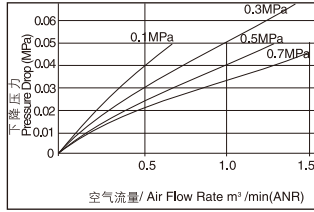
(a) 型号 Model	(b) 接管螺纹 Port Thread	(c) 安装型式 Mounting Type		
EAL1000	01 G1/8	空白 Blank	不带支架 Without Bracket	
EAL2000	02 G1/4			
EEL3000	02 G1/4			
	03 G3/8			
EAL3000	02 G1/4			
	03 G3/8			
	04 G1/2			
EAL4000	03 G3/8		B	C型支架 C-Bracket
	04 G1/2			
	06 G3/4			
EAL5000	06 G3/4			
	10 G1			

## Flow Diagrams

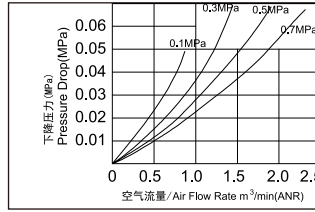
EAL1000-01



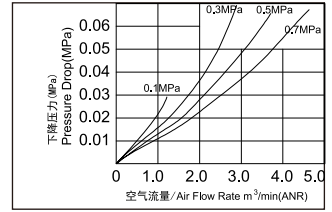
EAL2000-02



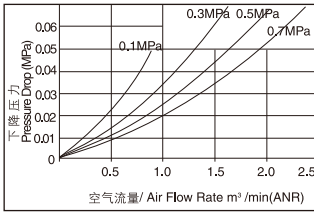
EEL3000-02



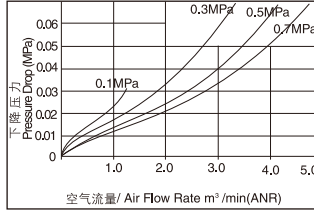
EEL3000-03



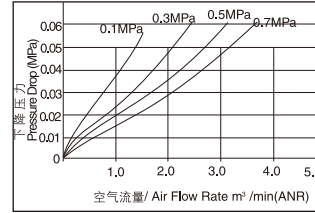
EAL3000-02



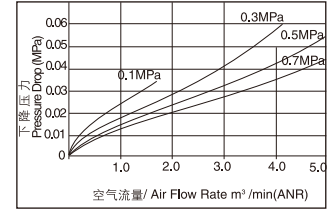
EAL3000-03



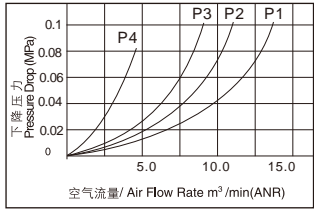
EAL4000-03



EAL4000-04



EAL5000-06/10

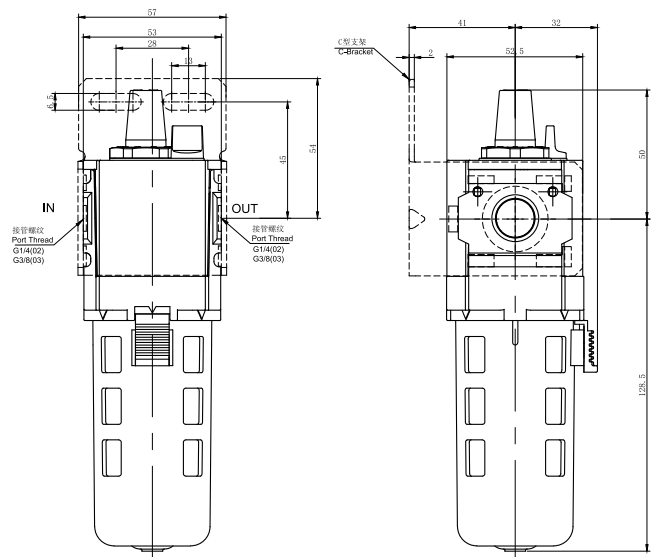
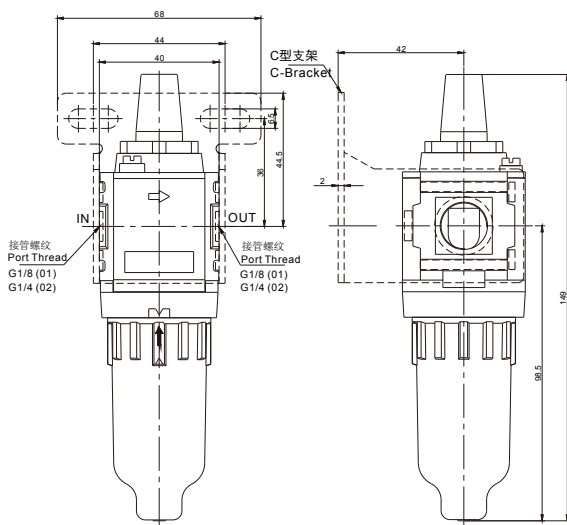


## Dimensions

EAL1000

EAL2000

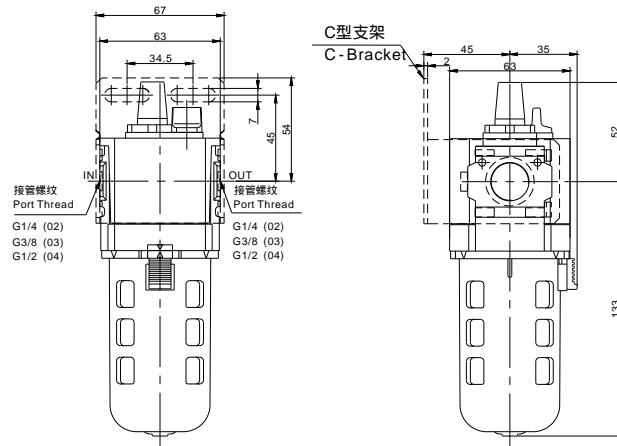
EEL3000



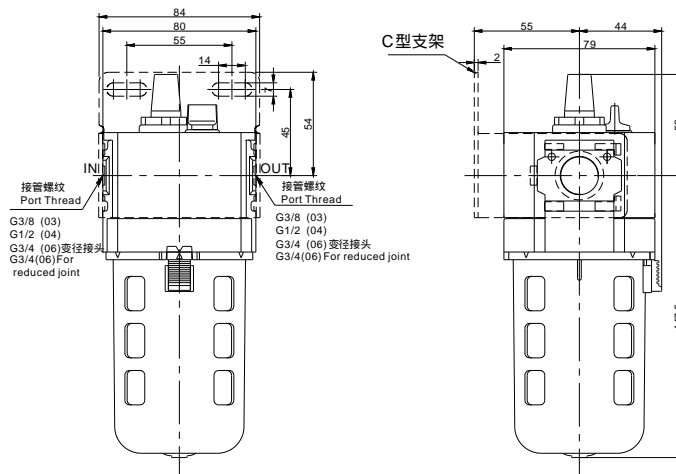


## ■ Dimensions

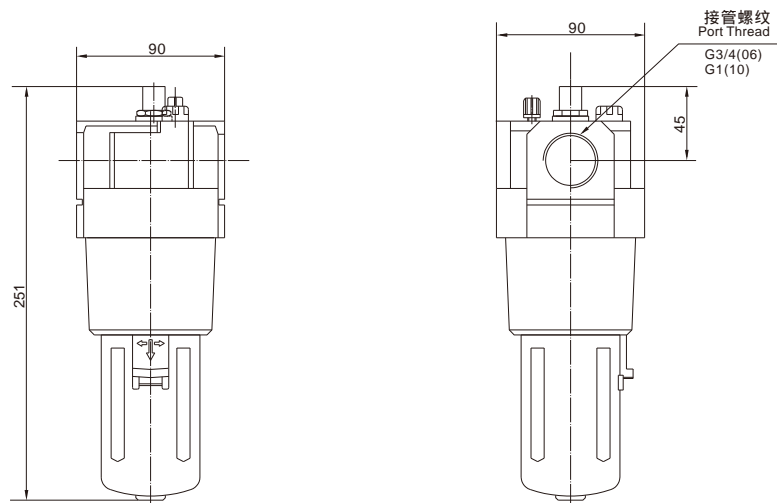
### EAL3000



### EAL4000



### EAL5000



# EAC Series FR+L



EAC1010/EAC2010



EEC3010



EAC3010



EAC4010



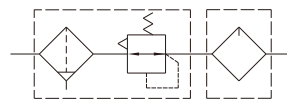
EAC5010

## Product Code System

(a) - (b) - (c) (d) (e)  
EAC3010 -03- E P1 S

压力表型式：方形压力表  
Pressure Gauge Type : Gauge  
过滤精度：5 μm聚乙烯(PE)  
Filtration:5 μm(PE)  
排水方式：无压排水  
Drain:Semi-Auto  
接管螺纹：G3/8  
Port Thread:G3/8  
型号/Model

## Symbol



## Specification

型号Model	EAC1010/EAC2010	EEC3010	EAC3010	EAC4010	EAC5010
最高使用压力/ Operating Pressure Mpa	1.0				
允许耐压力 / Max Pressure MPa	1.5				
使用温度 / Operating Temperature	0-60				
过滤精度/ Filtration μm	5 或40/5 或40				
设定压力范围/ Set Pressure MPa	0.05-0.85				
最少滴液流量/ Minimum Flow Oil Drop m <sup>3</sup> / min(ANR)	0.015	0.03	0.03	0.065	0.19
溢流压力/ Overflow Pressure MPa	设定压力/ Set Pressure + 0.05				
储油量/ Max Oil Level ml	20	40	85	170	140
废水储存容量 / Waste Bowl Capacity ml	12	72	45	80	150
使用油 / Oil Recommended	1级涡轮机油/ Turbine Oil NO.1(ISO VG 32) (不可使用锭子油/ NO Spindle oil is allowed)				
接管螺纹 / Port Thread G	1/8、 1/4	1/4、 3/8	1/4、 3/8、 1/2	3/8、 1/2(3/4)配合接头规格 3/4 For reduced port	3/4、 1

注意事项/ Caution

注：1、确认系统内没有承受压力之后，再拆卸杯子、杯子护罩；

2、最少滴液流量是指在设定压力为0.5MPa的基础上，每分钟5滴涡轮油的滴液流量

Note: 1.Assemble and disassemble the plastic bowl and bowl guard when it is confirmed that there's no load in control system.

2.The minimum drop flow refers to the drop flow of 5 turbine oil every minute on the basis of the pressure set at 0.5MPa

\* At 0.7MPa supply pressure,0.5MPa set pressure,0.1 Mpa pressure drop

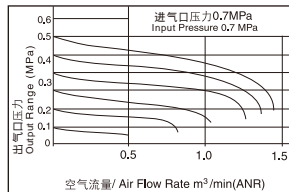
## Filter Regulator+Lubricator

(a) 型号 Model	(b) 接管螺纹 Port Thread		(c) 排水方式 Drain		(d) 过滤精度 Filtration		(e) 压力表型式 Pressure Guage		
							Blank	Gauge	
EAC1010	01	G1/8	空白 Blank	手动排水 Manual	P1	5 $\mu$ m 聚乙烯 (PE)	空白 Blank	无压力表 Without Gauge	
EAC2010	02	G1/4							
EEC3010	02	G1/4	E	无压排水 Semi-Auto	P2	5 $\mu$ m 烧结铜 (CU)	S	GS-27 方形压力表/Square	
		03							G3/8
EAC3010	02	G1/4	空白 Blank	手动排水 Manual	P3	40 $\mu$ m 聚乙烯 (PE)	R1	GR-40 圆形压力表/Round	
		03							G3/8
EAC4010	04	G1/2	E	无压排水 Semi-Auto	P4	40 $\mu$ m 烧结铜 (CU)	R1	GR-40 圆形压力表/Round	
		03							G3/8
		04							G1/2
EAC5010	06	G3/4	A	自动排水 Auto	P4	40 $\mu$ m 烧结铜 (CU)	空白 Blank	无压力表 Without Gauge GR-50 圆形压力表/Round	
		06							G3/4
		10							G1

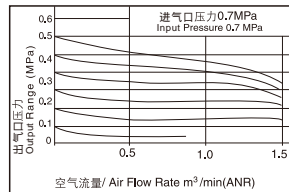
(a) 型号 Model	(b) 接管螺纹 Port Thread	组件/ Modular		最高使用压力 Operating Pressure (MPa)	调压范围 Set Pressure (MPa)
		过滤减压阀 Filter Regulator	油雾器 Lubricator		
EAC1010-01	G1/8	EAW1000-01	EAL1000-01	1.0	0.05~0.85
EAC2010-02	G1/4	EAW2000-02	EAL2000-02		
EEC3010-02	G1/4	EEW3000-02	EEL3000-02		
EEC3010-03	G3/8	EEW3000-03	EEL3000-03		
EAC3010-02	G1/4	EAW3000-02	EAL3000-02		
EAC3010-03	G3/8	EAW3000-03	EAL3000-03		
EAC3010-04	G1/2	EAW3000-04	EAL3000-04		
EAC4010-03	G3/8	EAW4000-03	EAL4000-03		
EAC4010-04	G1/2	EAW4000-04	EAL4000-04		
EAC4010-06	G3/4	EAW4000-06	EAL4000-06		
EAC5010-06	G3/4	EAW5000-06	EAL5000-06		
EAC5010-10	G1	EAW5000-10	EAL5000-10		

## Flow Diagrams

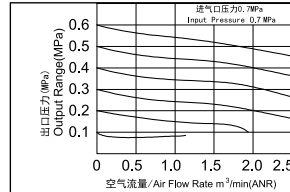
EAC1010-01



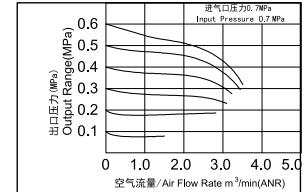
EAC2010-02



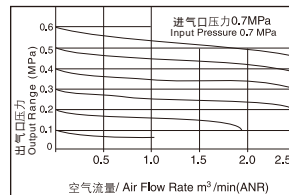
EEC3010-02



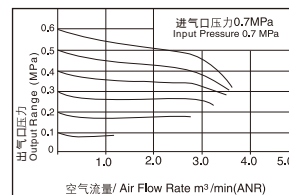
EEC3010-03



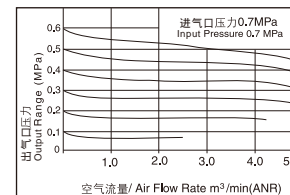
EAC3010-02



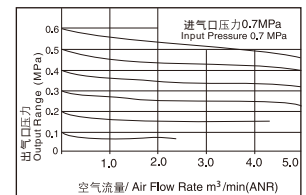
EAC3010-03



EAC4010-03



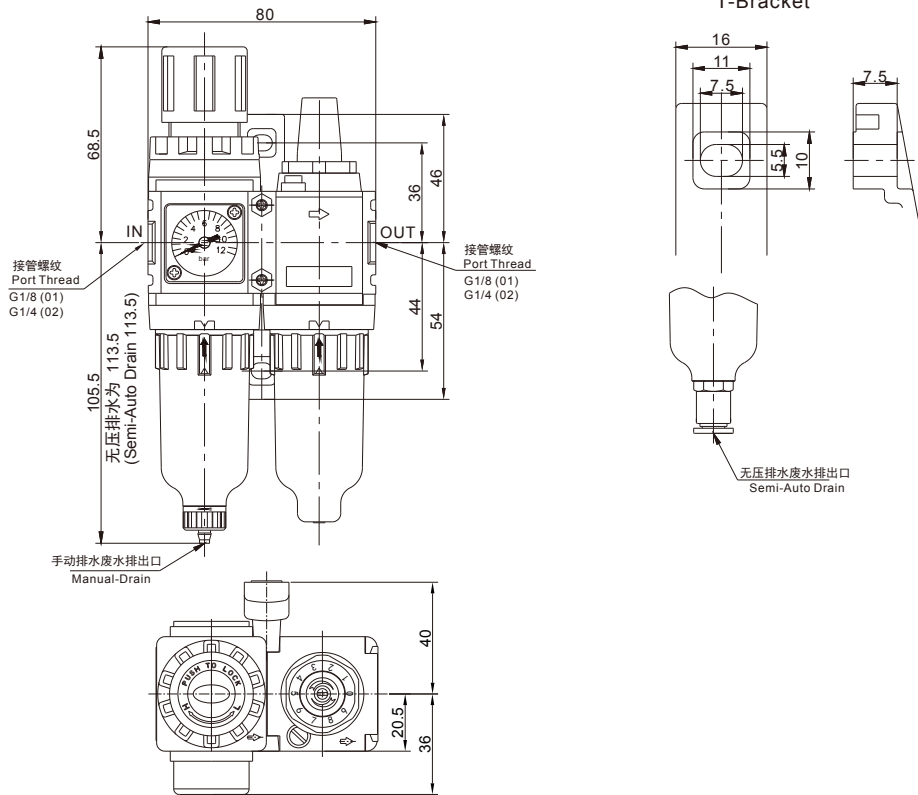
EAC4010-04



## Dimensions

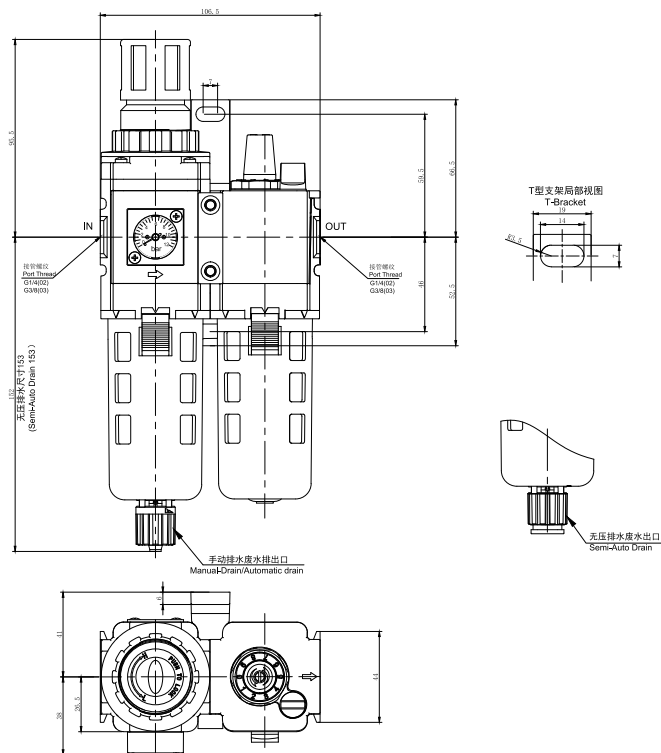
EAC1010

EAC2010



Note: Manual drain can insert ID 4 PU tube at drain outlet. Semi-Auto drain can insert OD 6PU tube at drain outlet.

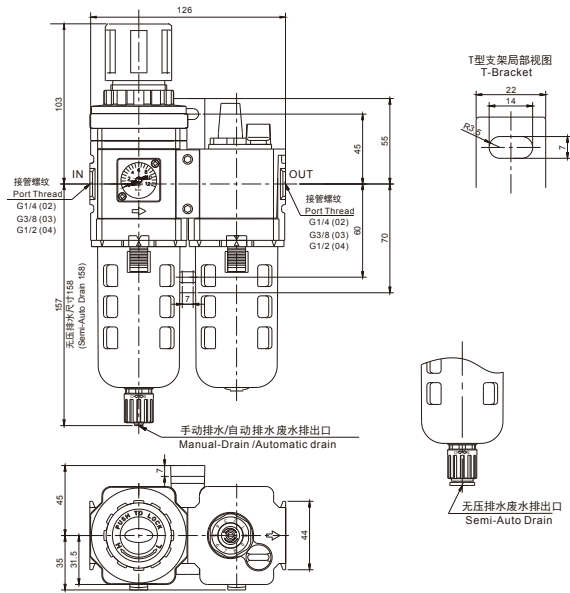
EEC3010



Note: Manual drain can insert ID 5.5 PU tube at drain outlet. Semi-Auto drain can insert OD 8PU tube at drain outlet.

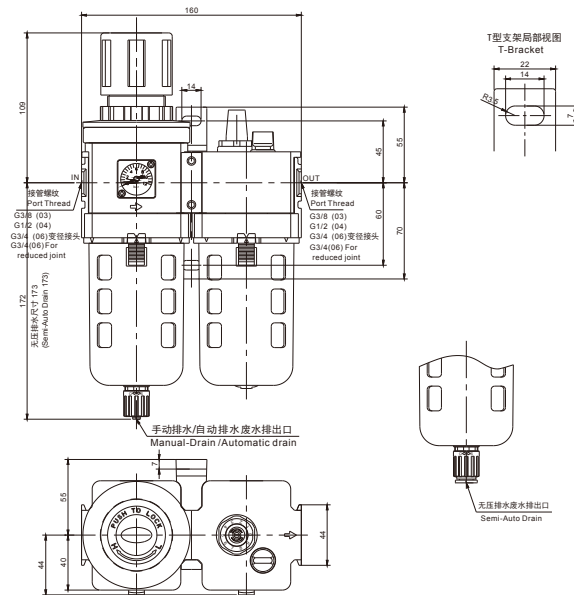
# ■ Dimensions

## EAC3010



Note: Manual drain or automatic drain can insert ID 5.5 PU tube at drain outlet. Semi-Auto drain can insert OD 8PU tube at drain outlet.

## EAC4010



Note: Manual drain or automatic drain can insert ID 5.5 PU tube at drain outlet. Semi-Auto drain can insert OD 8PU tube at drain outlet.

## EAC5010

