

valvola di non ritorno G1/4"-G3/8"-G1/2"

G1/4"-G3/8"-G1/2" non-return valve

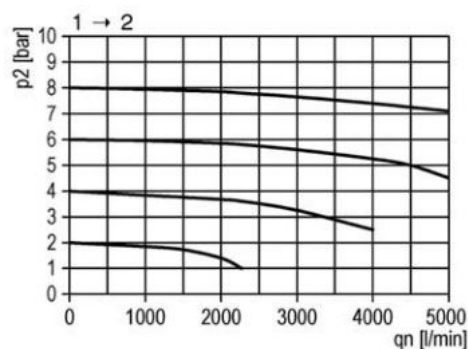
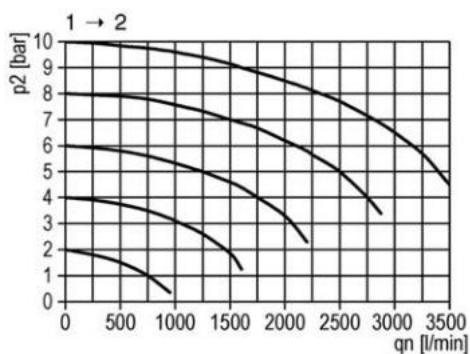


CODICE DI ORDINAZIONE ORDER CODE		VNR 2K 16.315.0	VNR 3K 16.355.0	VNR 4K 16.335.0
Attacchi Ports		G1/4"	G3/8"	G1/2"
Temperatura di esercizio Temperature range		0 ... +50°C	0 ... +50°C	0 ... +50°C
Peso Weight		0.24 kg	0.24 kg	0.37 kg
Pressione di esercizio Working pressure range	p_{min} p_{max}	0.4 bar; 0.04 MPa 16 bar; 1.6 MPa	0.4 bar; 0.04 MPa 16 bar; 1.6 MPa	0.4 bar; 0.04 MPa 16 bar; 1.6 MPa
Portata massima diretta Direct maximum flow rate	Q_{max}	1250 NI/min	1250 NI/min	4500 NI/min
Portata massima laterale Maximum flow rate in side direction	Q_{max}	700 NI/min	700 NI/min	1150 NI/min

G1/4"-G3/8"

Portata diretta
Direct flow rate

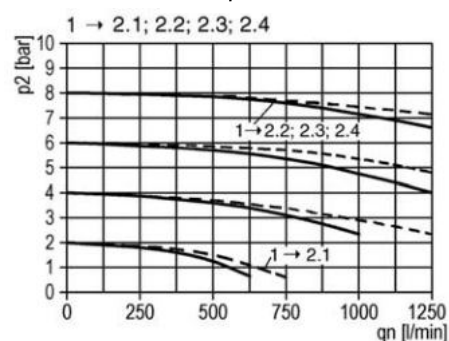
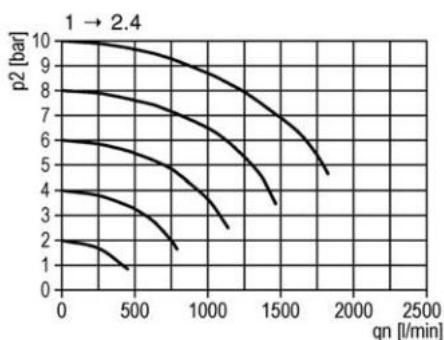
G1/2"



G1/4"-G3/8"

Portata laterale
Side flow rate

G1/2"



valvola di non ritorno G1/4"-G3/8"-G1/2"

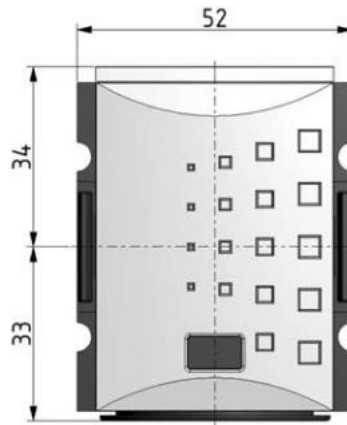
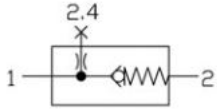
G1/4"-G3/8"-G1/2" non-return valve



VNR 2K

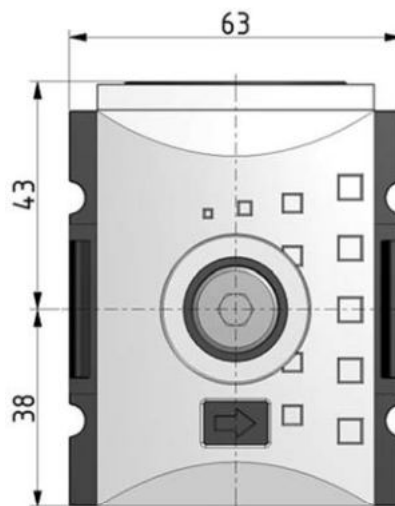
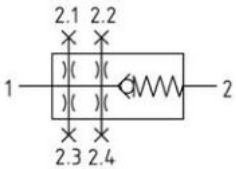
A richiesta disponibile con filetti NPT
On request available with NPT threads

VNR 3K



VNR 4K

A richiesta disponibile con filetti NPT
On request available with NPT threads



Materiali

Corpo: tecnopolimero

Guarnizioni: NBR

Parti interne: ottone e INOX

Materials

Body: technopolymer

Seals: NBR

Internal parts: brass and stainless steel

La staffa di fissaggio deve essere acquistata separatamente.

Mounting bracket is bought separately.