

## 2/2 way direct acting solenoid valve, G 1/8" – G 1/4"

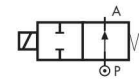
### Common features

Body material: brass (CW617N EN 12165)  
 Orifice material: stainless steel (1.4305 EN 10088/AISI 303)  
 Operator material: stainless steel  
 Protection class: IP 65 (with connector and gasket)

### Options

Available with body thread connection 1/8" (e.g. code RD262DVA), performance ratings remain the same as RD263DVA.  
 For steam version with filled PTFE seal (Sigodur) see valve model **RD236DL-** on page 21  
 For high pressure version with Ruby seal see valve model **RD236DR-1** on page 21

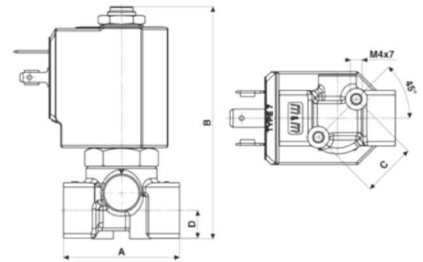
### TYPE: RD262/263



Normally Open



Dimensions & Weights		RD262	RD263
G connection	[ISO 228]	1/8"	1/4"
A	[mm]	40	40
B	[mm]	77.7	77.7
C	[mm]	18.5	18.5
D	[mm]	9.5	9.5
weight	[kg]	0.26	0.26



Flow direction overseat 1 → 2

### General purpose

Valve code	Nominal Ø [mm]	Flow rate Kvs [l/min]	OPD			Coils class 'H' only	
			min. [barg]	max. AC [barg]	max. DC [barg]	code	[Volts/Hz]
RD263DVA	1.0	0.5	0	30	30	7251	24 VDC
RD263DVC	1.5	1.3	0	24	24	7201	24 V 50/60 Hz
RD263DVG	2.5	3.4	0	16	16	7401	110 V 50 Hz - 120 V 60 Hz
RD263DVH	3.0	4.5	0	10	10	7601	200 V 50 Hz - 220 V 60 Hz
						7701	230 V 50 Hz - 240 V 60 Hz

### RD262/263 - FKM seal, NO -

Media: water, oil, air  
 Media temperature: -10 to +130 °C  
 Ambient temperature: -10 to +50 °C  
 Seal material: foodgrade FKM  
 Coil power: AC 18 VA (holding)  
 AC 36 VA (inrush)  
 DC 14 W

### Options

EPDM seal, temperature max. 120 °C (e.g. code RD262DEH)