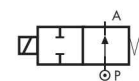


## 2/2 way direct acting solenoid valve, G 1/4"

### Common features

Body material: brass (CW617N EN 12165)  
 Orifice material: stainless steel (1.4305 EN 10088/AISI 303)  
 Operator material: stainless steel  
 Protection class: IP 65 (with connector and gasket)

### TYPE: RD236

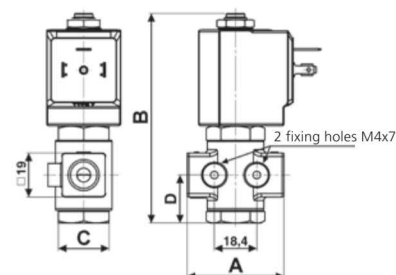


Normally Open



Dimensions & Weights		RD236
G connection	[ISO 228]	1/4"
A	[mm]	47*
B	[mm]	91
C	[mm]	Hex 22
D	[mm]	20.75
weight	[kg]	0.25

\*Since July 2014



Flow direction overseat 1 → 2

### General purpose

Valve code	Nominal Ø [mm]	Flow rate Kvs [l/min]	OPD			Coils	
			min. [barg]	max. AC [barg]	max. DC [barg]	code	[Volts/Hz]
RD236DVA	1.0	0.5	0	25	25	7250	24 VDC
RD236DVC	1.5	1.3	0	20	20	7200	24 V 50/60 Hz
RD236DVE	2.0	2.0	0	18	18	7400	110 V 50 Hz - 120 V 60 Hz
RD236DVG	2.5	2.8	0	15	15	7600	200 V 50 Hz - 220 V 60 Hz
RD236DVH	3.0	3.5	0	12	12	7700	230 V 50 Hz - 240 V 60 Hz
RD236DVM	4.5	5.5	0	5	5		
RD236DVP	6.0	8.5	0	2	2		

### RD236 - FKM seal, NO -

Media: water, oil, air  
 Media temperature: -10 to +130 °C  
 Ambient temperature: -10 to +50 °C  
 Seal material: foodgrade FKM  
 Coil power: AC 18 VA (holding)  
 AC 36 VA (inrush)  
 DC 14 W

### Steam

Valve code	Nominal Ø [mm]	Flow rate Kvs [l/min]	OPD			Coils class 'H' only	
			min. [barg]	max. AC [barg]	max. DC [barg]	code	[Volts/Hz]
RD236DLA	1.0	0.5	0	9	9	7251	24 VDC
RD236DLC	1.5	1.3	0	9	9	7201	24 V 50/60 Hz
RD236DLE	2.0	2.0	0	9	9	7401	110 V 50 Hz - 120 V 60 Hz
RD236DLH	3.0	3.5	0	9	9	7601	200 V 50 Hz - 220 V 60 Hz
						7701	230 V 50 Hz - 240 V 60 Hz

### RD236 - FILLED PTFE seal, NO -

Media: steam  
 Media temperature: -10 to +180 °C  
 Ambient temperature: -10 to +70 °C  
 Seal material: Sigodur (filled PTFE)  
 Coil power: AC 18 VA (holding)  
 AC 36 VA (inrush)  
 DC 14 W

**Notes**  
 Seamless tube as standard

### High pressure

Valve code	Nominal Ø [mm]	Flow rate Kvs [l/min]	OPD			Coils high power - class 'H' only	
			min. [barg]	max. AC [barg]	max. DC [barg]	code	[Volts/Hz]
RD236DRA1	1.0	0.5	0	180	180	7221	24 VDC
RD236DRC1	1.5	1.3	0	150	150	72K1	24 V 50/60 Hz
RD236DRE1	2.0	2.0	0	60	60	74K1	110 V 50 Hz - 120 V 60 Hz
RD236DRG1	2.5	2.8	0	37	37	77K1	230 V 50 Hz - 240 V 60 Hz
RD236DRH1	3.0	3.5	0	28	28		

### RD236 - RUBY seal, NO -

Media<sup>1</sup>: water, oil, liquids  
 Media temperature: -10 to +130 °C  
 Ambient temperature: -10 to +50 °C  
 Seal material: Ruby  
 Coil power: AC 25 VA (holding)  
 AC 50 VA (inrush)  
 DC 22 W

**Notes**  
 Seamless tube as standard  
<sup>1</sup> Not 100% leak-proof when used with air/gases.  
 Approximate leak rate is 1,5 ml/min at max. OPD.