

# Standardverschraubungen

## Standard fittings

### Raccordi Filettati Standard

#### Technische Daten

Betriebstemperatur	max. +150 °C	abhängig von den Temperatureigenschaften des Schlauches
Betriebsdruck	bis 60 bar	abhängig vom Druckbereich des eingesetzten Schlauches/ Rohres und der verwendeten Temperatur
Werkstoffe	Messing vernickelt bzw. blank	CW614N und CW617N
Gewinde	zyl. Gew. DIN EN ISO 228 kon. Gew. DIN EN 10226 (ISO7 / DIN 2999) metr. Gew. DIN ISO 262	
Medium	pneumatische, ölhydraulische und hydraulische Kreisläufe	

#### Technical Data

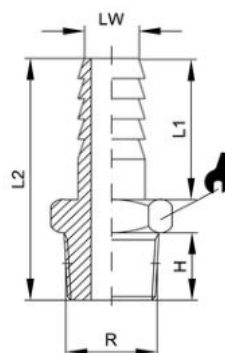
Operating temperature	max. +150 °C	Dependent on the temperature range of the tube/pipe used
Operating pressure	up to 16 bar	Dependent on the pressure range of the tube/pipe used and the temperature used
Materials	Brass, nickel-plated or polished	CW614N and CW617N
Thread	Cyl. thread, DIN EN ISO 228 Con. thread, DIN EN 10226 (ISO7 / DIN Medium 2999) Metr. thread, DIN ISO 262	
Medium	Pneumatic, oil-hydraulic and hydraulic circuits	


#### Dati tecnici

Temperatura di esercizio	max. +150 °C	In funzione del campo di temperatura del tubo flessibile/rigido utilizzato
Pressione di esercizio	fino a 60 bar	In funzione del campo di pressione del tubo flessibile/rigido utilizzato e della temperatura di esercizio
Materiali	Ottone (Ms58) nichelato o lucidato	
Filetto	Fil. cilindrico DIN EN ISO 228 Fil. conico DIN EN 10226 (ISO7/DIN 2999) Fil. metrico DIN ISO 262	
Fluidi utilizzabili	Circuiti pneumatici, oleoidraulici e idraulici	

## RC342

Schlauchtülle konisch  
Male hose adapter con.  
Portagomma maschio conico



Code	LW	R	H	L1	L2	
RC342-6-1/8	6	R1/8	8	19	31,5	12
RC342-6-1/4	6	R1/4	11	19	35	14
RC342-7-1/8	7	R1/8	8	19	31,5	12
RC342-7-1/4	7	R1/4	11	19	35	14
RC342-8-1/8	8	R1/8	8	19	31,5	12
RC342-8-1/4	8	R1/4	11	20	36	14
RC342-9-1/8	9	R1/8	8	19	31,5	12
RC342-9-1/4	9	R1/4	11	19	35	14
RC342-9-3/8	9	R3/8	11,5	19	35,5	17
RC342-9-1/2	9	R1/2	14	19	38,5	22
RC342-10-1/8	10	R1/8	8	20	32,5	12
RC342-10-1/4	10	R1/4	11	20	36	14
RC342-10-3/8	10	R3/8	11,5	20	36,5	17
RC342-10-1/2	10	R1/2	14	20	39,5	22
RC342-12-1/4	12	R1/4	11	20	36	14
RC342-12-3/8	12	R3/8	11,5	20	36,5	17
RC342-12-1/2	12	R1/2	14	20	39,5	22
RC342-14-3/8	14	R3/8	11,5	22	38,5	17
RC342-14-1/2	14	R1/2	14	22	41,5	22
RC342-16-3/8	16	R3/8	11,5	22	38,5	17
RC342-16-1/2	16	R1/2	14	22	41,5	22
RC342-16-3/4	16	R3/4	16,5	22	45	27
RC342-17-3/8	17	R3/8	11,5	24	40,5	18
RC342-17-1/2	17	R1/2	14	24	43,5	22
RC342-18-3/8	18	R3/8	11,5	24	40,5	19
RC342-18-1/2	18	R1/2	14	24	43,5	22
RC342-18-3/4	18	R3/4	16,5	24	47	27
RC342-20-3/8	20	R3/8	11,5	24	41	22
RC342-20-1/2	20	R1/2	14	24	43,5	22
RC342-20-3/4	20	R3/4	16,5	24	46,5	27
RC342-25-3/4	25	R3/4	16,5	30	53	27
RC342-25-1	25	R1	19	30	56	34