

attuatori da pannello

actuators for panel mounting



pulsante protetto protected push button

| codice code | colori standard standard colours |
|----------------|--|
| PR1/NRB | ROSSO, NERO e BIANCO (forniti assieme nel kit) red, black and white (supplied in kit) |

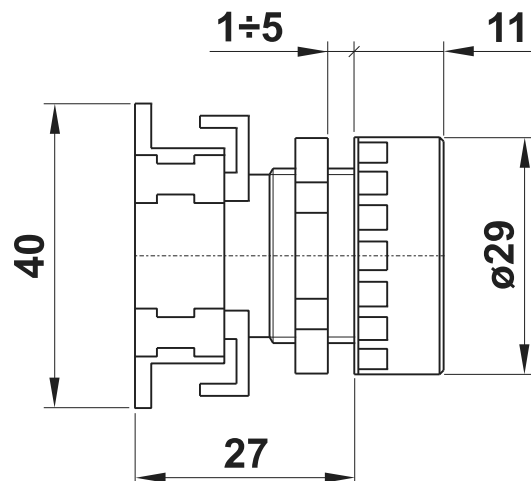
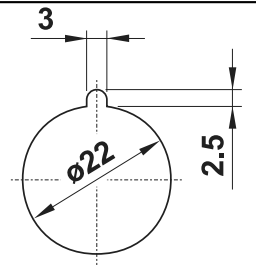
- I seguenti colori sono disponibili ordinandoli in aggiunta al kit standard
The following colours can be ordered separately

| codice code | colore colour |
|----------------|----------------------|
| DCV1 | VERDE [green] |
| DCG1 | GIALLO [yellow] |
| DCA1 | AZZURRO [light blue] |
| DCB1 | BIANCO [white] |

| codice code | colore colour |
|----------------|------------------|
| DCN1 | NERO [black] |
| DCR1 | ROSSO [red] |

Foro per montaggio a pannello
con asola antirotazione

Panel mounting hole with antirotation
feature



fungo ø40 ø40 mushroom

| codice code | descrizione description | colore colour |
|----------------|---|------------------|
| PF2/40 | monostabile assiale [axial mono-stable] | ROSSO [red] |
| PF1/40 | monostabile assiale [axial mono-stable] | NERO [black] |
| PFB2/40 | sblocco a rotazione [turn to unlock] | ROSSO [red] |

