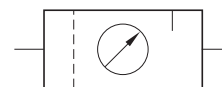


mini gruppo trattam. aria FR+L G1/4"

mini G1/4" FR+L air preparation unit

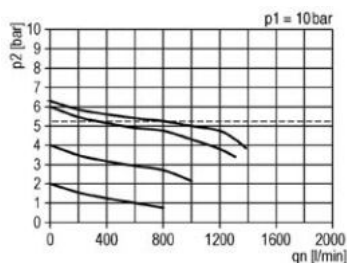


- Regolatore a membrana con valvola di scarico sovrappressione (relieving); filtro 5 μm
Diaphragm-type pressure regulator with relieving; filter 5 μm
- Manometro incorporato 0 ... 12 bar; capacità tazza: 35 cm^3
Embedded manometer 0 ... 12 bar; bowl capacity: 35 cm^3
- Installazione in linea o a pannello; staffa di fissaggio e ghiera a richiesta
In-line or panel mounting; mounting bracket and ring on request

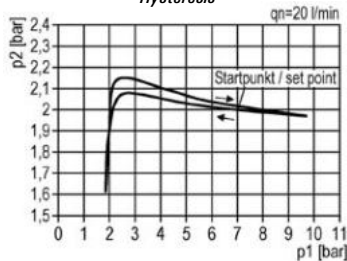


CODICE DI ORDINAZIONE ORDER CODE		FR+L 2MK-08-05-S 16.298.0
Attacchi Ports		G1/4"
Temperatura di esercizio Temperature range		0 ... +50°C
Peso Weight		0.39 kg
Pressione di alimentazione Inlet pressure range	$P_{1 \text{ min}}$ $P_{1 \text{ max}}$	1.5 bar; 0.15 MPa 12 bar; 1.2 MPa
Pressione di utilizzo Outlet pressure range	$P_{2 \text{ min}}$ $P_{2 \text{ max}}$	0 bar; 0 MPa 8 bar; 0.8 MPa
Portata massima Maximum flow rate	$p = 6.3 \text{ bar}; \Delta p = 1 \text{ bar}$	Q_{max} 600 NI/min

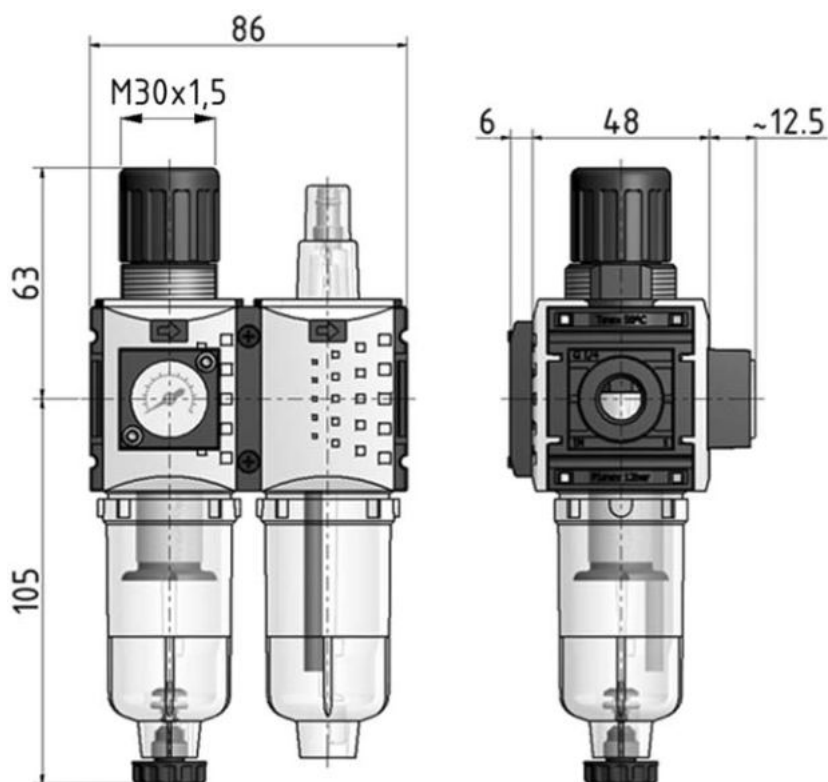
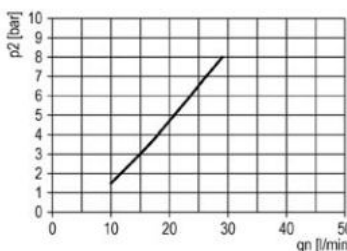
Caratteristiche di portata
Flow characteristics



Isteresi
Hysteresis



Rapporto olio/aria
Oil/air ratio



Materiali

Corpo: tecnopolimero

Guarnizioni: NBR

Parti interne: ottone e INOX

Tazza: policarbonato

Materials

Body: technopolymer

Seals: NBR

Internal parts: brass and stainless steel

Bowl: polycarbonate