

2/2 WAY PILOT OPERATED SOLENOID VALVE, G 1/4" ÷ G 1"

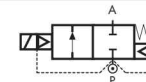
COMMON FEATURES

- Media: hot water and steam
- Media temperature: +10°C ÷ +150°C
- Ambient temperature: -10°C ÷ +70°C
- Body material: brass (CW617N EN 12165)
- Orifice material: stainless steel (1.4305 EN 10088/AISI 303)
- Operator material: stainless steel
- Operator seal material: EPM PX 70/80
- Diaphragm material: PTFE
- Main seal material: EPM PX 70/80
- Protection class: IP 65 (with connector and gasket)

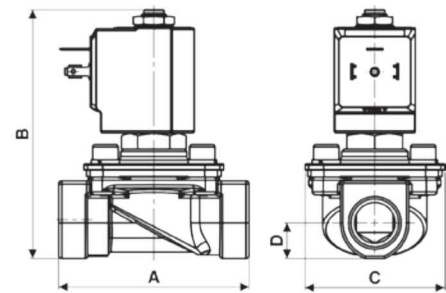
NOTES

Seamless tube as standard

TYPE: D887÷D892



Normally Closed



Flow direction overseat 1 → 2

DIMENSIONS & WEIGHTS		D887	D888	D889	D890	D892
G connection	[ISO 228]	1/4"	3/8"	1/2"	3/4"	1"
A	[mm]	75	75	75	85	82
B	[mm]	108	108	108	108	108
C	[mm]	55	55	55	55	55
D	[mm]	14	14	14	21.5	21.5
weight	[kg]	0.55	0.5	0.5	0.8	0.8

VALVE	nominal Ø	flow rate Kvs	min.	OPD		COILS	
				max. AC	max. DC	class 'H' only	
code	[mm]	[l/min]	[barg]	[barg]	[barg]	code	[Volts/Hz]
D887DPV	11.5	35	0.3	4.5	4.5	7221	24v DC
D888DPV	11.5	50	0.3	4.5	4.5	7201	24v 50/60Hz
D889DPV	11.5	55	0.3	4.5	4.5	7401	110v 50Hz - 120v 60Hz
D890DPV	11.5	70	0.3	4.5	4.5	7601	200v 50Hz - 220v 60Hz
D892DPV	11.5	75	0.3	4.5	4.5	7701	230v 50Hz - 240v 60Hz

D887÷D892 - PTFE seal, NC -

- Coil power: AC 18vA (holding)
- AC 36vA (inrush)
- DC 22w

STEAM

