

2/2 way pilot operated solenoid valve, G 1 1/4" – G 2"

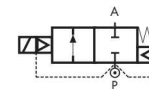
Common features

Media: water, oil, air
 Media temperature: -10 to +90 °C
 Ambient temperature: -10 to +50 °C
 Body material: brass (CW617N EN 12165)
 Operator material: stainless steel
 Operator seal and diaphragm material: NBR
 Silver shading ring as standard
 Protection class: IP 65 (with connector and gasket)
 Speed control screw as standard

Options

FKM seal, temperature max. 130 °C (e.g. code D223DVK)
 EPDM seal, temperature max. 120 °C (e.g. code RD223DEK)
 Electroless nickel plating treatment (e.g. code D222DVYK)
 NPT connection on request, minimum batch may be required (e.g. code D223DBKN)

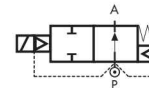
TYPE: D223–D225



Normally Closed

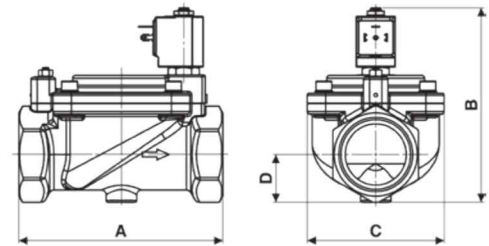


TYPE: RD223–RD225



Normally Open

Dimensions & weights		D223	D224	D225	RD223	RD224	RD225
G connection	[ISO 228]	1 1/4"	1 1/2"	2"	1 1/4"	1 1/2"	2"
A	[mm]	140	140	168	140	140	168
B	[mm]	140	140	158	140	140	158
C	[mm]	96	96	112	96	96	112
D	[mm]	31	31	39	31	31	39
weight	[kg]	2.8	2.8	3.9	2.8	2.8	3.9



Flow direction overseat 1 → 2

General purpose

Valve code	Nominal Ø [mm]	Flow rate Kvs [l/min]	OPD			Coils	
			min. [barg]	max. AC [barg]	max. DC [barg]	code	[Volts/Hz]
D223DBK	40	370	0.5	16	16	7250	24 VDC
D224DBK	40	400	0.5	16	16	7200	24 V 50/60 Hz
D225DBJ	50	540	0.5	16	16	7400	110 V 50 Hz - 120 V 60 Hz
						7600	200 V 50 Hz - 220 V 60 Hz
						7700	230 V 50 Hz - 240 V 60 Hz

D223/224/225 - NBR seal, NC -

Coil power: AC 18 VA (holding)
 AC 36 VA (inrush)
 DC 14 W

Options

Manual override (e.g. code D223DBKM)
 For vacuum see page 37
 UL approved coils (e.g. code 725R)

General purpose

Valve code	Nominal Ø [mm]	Flow rate Kvs [l/min]	OPD			Coils class 'H' only	
			min. [barg]	max. AC [barg]	max. DC [barg]	code	[Volts/Hz]
RD223DBK	40	370	0.5	16	16	7251	24 VDC
RD224DBK	40	400	0.5	16	16	7201	24 V 50/60 Hz
RD225DBJ	50	540	0.5	16	16	7401	110 V 50 Hz - 120 V 60 Hz
						7601	200 V 50 Hz - 220 V 60 Hz
						7701	230 V 50 Hz - 240 V 60 Hz

D223/224/225 - NBR seal, NO -

Coil power: AC 18 VA (holding)
 AC 36 VA (inrush)
 DC 14 W