

2/2 WAY PILOT OPERATED VALVE WITH ASSISTED LIFT, G 1/4" ÷ G 1"

COMMON FEATURES

- Media: water, oil, air
- Media temperature: -10°C ÷ +90°C
- Ambient temperature: -10°C ÷ +50°C
- Body material: brass (CW617N EN 12165)
- Operator material: stainless steel
- Operator seal material: FKM
- Main seal and diaphragm material: NBR
- Protection class: IP 65 (with connector and gasket)

OPTIONS

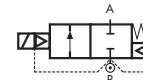
- EPDM seal, temperature max. 120°C (e.g. code D188DEW)
- FKM seal, temperature max. 130°C (e.g. code C D189DVW)
- Electroless nickel plating treatment (e.g. code D190DBWK)
- NPT connection on request, minimum batch may be required (e.g. code D192DBWN)

DIMENSIONS & WEIGHTS		D187 C D187	D188 C D188	D189 C D189	D190 C D190	D192 C D192 compact	D293 C D293
G connection	[ISO 228]	1/4"	3/8"	1/2"	3/4"	1"	1"
A	[mm]	75	75	75	85	85	100
B	[mm]	108	108	108	108	108	113
C	[mm]	55	55	55	55	55	70
D	[mm]	14	14	14	21.5	21.5	21.5
weight	[kg]	0.5	0.5	0.5	0.8	0.7	1.2

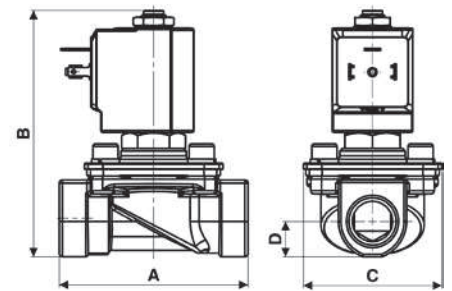
VALVE	nominal Ø	flow rate Kvs	min.	OPD		COILS	
				max. AC	max. DC	AC only	
code	[mm]	[l/min]	[barg]	[barg]	[barg]	code	[Volts/Hz]
D187DBW	15	50	0	16	—	7200	24v 50/60Hz
D188DBW	15	60	0	16	—	7400	110v 50Hz - 120v 60Hz
D189DBW	15	65	0	16	—	7600	200v 50Hz - 220v 60Hz
D190DBW	15	80	0	16	—	7700	230v 50Hz - 240v 60Hz
D192DBW compact	15	85	0	16	—		
D293DBY	25	140	0	16	—		

VALVE	nominal Ø	flow rate Kvs	min.	OPD		COILS	
				max. AC	max. DC	DC only	
code	[mm]	[l/min]	[barg]	[barg]	[barg]	code	[Volts/Hz]
C D187DBW	15	50	0	—	6	7150	12v DC
C D188DBW	15	60	0	—	6	7250	24v DC
C D189DBW	15	65	0	—	6	7450	110v DC
C D190DBW	15	80	0	—	6	7750	230v DC
C D192DBW compact	15	85	0	—	6		
C D293DBY	25	140	0	—	3.5		

TYPE: D187 ÷ D192/293



Normally Closed



Flow direction overseat 1 → 2

D187 ÷ 192/293 - NBR seal, NC -

- Coil power: AC 18vA (holding)
- AC 36vA (inrush)

OPTIONS

- For vacuum see page 36

NOTES

- Speed control screw as standard for type D293

C D187 ÷ 192/293 - NBR seal, NC -

- Coil power: DC 14w

NOTES

- Speed control screw as standard for type C D293

GENERAL PURPOSE

GENERAL PURPOSE