

3/2 way direct acting solenoid valve, G 1/8"

Common features

Media¹: water, oil, air
 Media temperature: -10 to +130 °C
 Ambient temperature: -10 to +50 °C
 Body material: brass (CW719R EN 12165) low lead content
 Orifice material: stainless steel (1.4305 EN 10088/AISI 303)
 Operator material: stainless steel
 Seal material: foodgrade FKM
 Protection class: IP 65 (with connector and gasket)

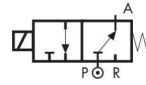
Options

EPDM seal, temperature max. 120 °C (e.g. code RB397CEC)
 Electroless nickel plating treatment (e.g. code B397CVCK)

Notes

¹ Valve suitable for contact with food media as per the EEC Directives and Regulations.
 For more specific information, please contact Rotork Sales Department.

TYPE: SB397



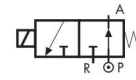
Normally Open

TYPE: B297



Normally Closed

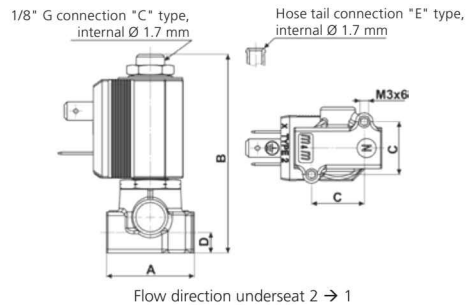
TYPE: RB397



Normally Open



Dimensions & weights		B397	RB397	SB397
G connection	[ISO 228]	1/8"	1/8"	1/8"
A	[mm]	30	30	30
B	[mm]	67.8	72.5	67.8
C	[mm]	18	18	18
D	[mm]	7	7	7
weight	[kg]	0.15	0.16	0.15



Flow direction underseat 2 → 1

General purpose

Valve code	Nominal Ø [mm]	Flow rate Kvs [l/min]	OPD			Coils	
			min. [barg]	max. AC [barg]	max. DC [barg]	code	[Volts/Hz]
B397CVA	1.0	0.5	0	18	18	2250	24 VDC
B397CVB	1.2	0.7	0	15	15	2200	24 V 50/60 Hz
B397CVC	1.5	1.0	0	10	10	2400	110 V 50 Hz - 120 V 60 Hz
B397CVE	2.0	1.9	0	5	5	2600	200 V 50 Hz - 220 V 60 Hz
B397CVH	3.0	3.5	0	2	2	2700	230 V 50 Hz - 240 V 60 Hz

B397 - FKM seal, NC

Coil power: AC 10 VA (holding)
 AC 16 VA (inrush)
 DC 7 W

Options

Manual override (e.g. code B397CVBM)
 Armature tube with hose tail Ø 6 mm (e.g. code B397EVE)
 UL approved coils (e.g. code 270R)

Automation

Valve code	Nominal Ø 1 → 2 1 → 3 [mm]		Flow rate Kvs [l/min]	OPD			Coils	
	[mm]	[mm]		min. [barg]	max. AC [barg]	max. DC [barg]	code	[Volts/Hz]
SB397CVB	1.2	1.7	0.7	0	6	3	2250	24 VDC
SB397CVC	1.5	1.7	1.0	0	4.5	2	2200	24 V 50/60 Hz
							2400	110 V 50 Hz - 120 V 60 Hz
							2600	200 V 50 Hz - 220 V 60 Hz
							2700	230 V 50 Hz - 240 V 60 Hz

SB397 - FKM seal, 2nd SERVICE -

Coil power: AC 10 VA (holding)
 AC 16 VA (inrush)
 DC 7 W

Options

Manual override (e.g. code SB397CVCM).

Notes

Flow direction: **OFF 3 → 1 - ON 1 → 2**

Automation

Valve code	Nominal Ø [mm]	Flow rate Kvs [l/min]	OPD			Coils	
			min. [barg]	max. AC [barg]	max. DC [barg]	code	[Volts/Hz]
RB397CVA	1.0	0.5	0	15	12	2250 ¹	24 VDC
RB397CVB	1.2	0.7	0	15	12	2200	24 V 50/60 Hz
RB397CVC	1.5	1.0	0	10	8	2400	110 V 50 Hz - 120 V 60 Hz
RB397CVE	2.0	1.9	0	8	6	2600	200 V 50 Hz - 220 V 60 Hz
RB397CVG	2.5	2.5	0	4	4	2700	230 V 50 Hz - 240 V 60 Hz
RB397CVH	3.0	3.5	0	3.5	3.5		

RB397 - FKM seal, NO

Coil power: AC 10 VA (holding)
 AC 16 VA (inrush)
 DC 7 W

¹ For continuous service in DC we recommend the use of M&M coils 10 Watt, class H (see options on page 41)