

2/2 way pilot operated solenoid valve, G 1/4" – G 1"

Common features

Media: water, oil, air
 Media temperature: -10 to +90 °C
 Ambient temperature: -10 to +50 °C
 Body material: brass (CW617N EN 12165)
 Operator material: stainless steel
 Operator seal and diaphragm material: NBR
 Protection class: IP 65 (with connector and gasket)

Options

FKM seal, temperature max. 130 °C (e.g. code B205DVZ)
 EPDM seal, temperature max. 120 °C (e.g. code B204DEZ)
 Electroless nickel plating treatment (e.g. code B205DBZK)
 NPT connection on request, minimum batch may be required (e.g. code RB205DBZN)
 UL approved coils (e.g. code 220R)
 Speed control screw only for type B206-, B222-, RB206- and RB222-
 (e.g. code B206DBYV / RB222DBYV)

Dimensions & weights		B203 B204	B205	B206 compact	B206	B222	RB203 RB204	RB205	RB206 compact	RB206	RB222
G connection	[ISO 228]	1/4" 3/8"	1/2"	3/4"	3/4"	1"	1/4" 3/8"	1/2"	3/4"	3/4"	1"
A	[mm]	67	67	82	96	96	67	67	82	96	96
B	[mm]	90	90	105	115	115	92.5	92.5	107.5	117.5	117.5
C	[mm]	45.6	45.6	51.6	72	72	45.6	45.6	51.6	72	72
D	[mm]	15	15	20.25	23	23	15	15	20.25	23	23
weight	[kg]	0.4	0.4	0.6	1.2	1.2	0.4	0.4	0.6	1.2	1.2

General purpose

Valve code	Nominal Ø [mm]	Flow rate Kvs [l/min]	OPD			Coils	
			min. [barg]	max. AC [barg]	max. DC [barg]	code	[Volts/Hz]
B203DBZ	13	26	0.3	16	16	2250	24 VDC
B204DBZ	13	55	0.3	16	16	2200	24 V 50/60 Hz
B205DBZ	13	63	0.3	16	16	2400	110 V 50 Hz - 120 V 60 Hz
B206DBX comp.	21	100	0.3	16	16	2600	200 V 50 Hz - 220 V 60 Hz
B206DBY ¹	25	140	0.3	16	16	2700	230 V 50 Hz - 240 V 60 Hz
B222DBY	25	160	0.3	16	16		

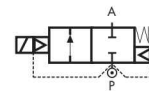
General purpose

Valve code	Nominal Ø [mm]	Flow rate Kvs [l/min]	OPD			Coils	
			min. [barg]	max. AC [barg]	max. DC [barg]	code	[Volts/Hz]
RB203DBZ	13	26	0.3	16	16	2250 ²	24 VDC
RB204DBZ	13	55	0.3	16	16	2200	24 V 50/60 Hz
RB205DBZ	13	63	0.3	16	16	2400	110 V 50 Hz - 120 V 60 Hz
RB206DBX comp.	21	100	0.3	16	16	2600	200 V 50 Hz - 220 V 60 Hz
RB206DBY ¹	25	140	0.3	16	16	2700	230 V 50 Hz - 240 V 60 Hz
RB222DBY	25	160	0.3	16	16		

¹ Product subject to phase-out, please contact Rotork Sales Department for availability

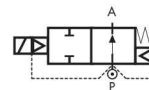
² For continuous service in DC we recommend the use of M&M coils 10 Watt, class H (see options on page 41)

TYPE: B203–B222

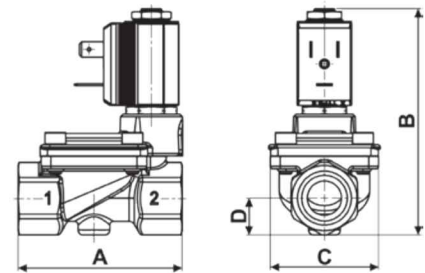


Normally Closed

TYPE: RB203–RB222



Normally Open



Flow direction overseat 1 → 2

B203 – B222 - NBR seal, NC -

Coil power: AC 10 VA (holding)
 AC 16 VA (inrush)
 DC 7 W

Options

Manual override (e.g. code B204DBZM)

RB203 – RB222 - NBR seal, NO -

Coil power: AC 10 VA (holding)
 AC 16 VA (inrush)
 DC 7 W