

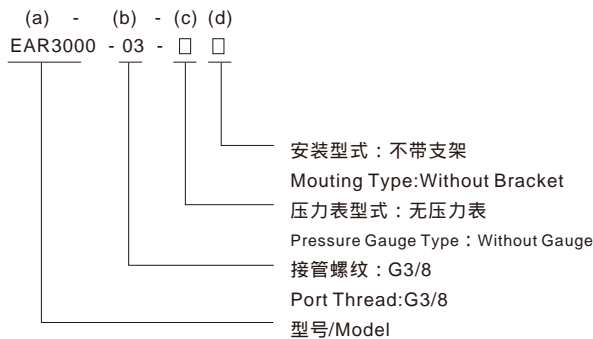
# EAR Series Regulator(R)



## Specification

型号Model	EAR1000/EAR2000	EER3000	EAR3000	EAR4000	EAR5000
最高使用压力/ Operating Pressure MPa	1.0				
允许耐压力/ Max Pressure MPa	1.5				
使用温度 / Operating Temperature	0-60				
设定压力范围/ Set Pressure MPa	0.05-0.85				
溢流压力/ Overflow Pressure MPa	设定压力/ Set Pressure + 0.05				
配管螺纹/ Port Thread G	1/8, 1/4	1/4, 3/8	1/4, 3/8, 1/2	3/8, 1/2 (3/8 螺合部规格参照 3/4 For reduced part)	3/4, 1

## Product Code System



## Regulator

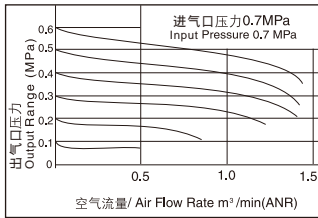
(a) 型号 Model	(b) 接管螺纹 Port Thread	最高使用压力 Operating Pressure (MPa)	调压范围 Set Pressure (MPa)	最大流量/ Max Air Flow * M <sup>3</sup> /min(ANR)
EAR1000-01	G1/8	1.0	0.05-0.85	0.6
EAR2000-02	G1/4			1.0
EER3000-02	G1/4			1.9
EER3000-03	G3/8			2.5
EAR3000-02	G1/4			2.1
EAR3000-03	G3/8			2.8
EAR3000-04	G1/2			3.5
EAR4000-03	G3/8			4.0
EAR4000-04	G1/2			5.0
EAR4000-06	G3/4			6.0
EAR5000-06	G3/4	8.0		
EAR5000-10	G1	8.0		

Operating temperature range: 0-60°C  
 \* At 0.7MPa supply pressure, 0.5MPa set pressure, 0.1 Mpa pressure drop

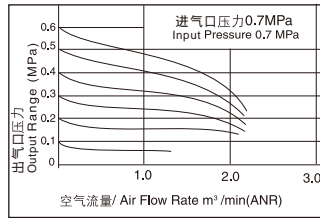
(a) 型号 Model	(b) 接管螺纹 Port Thread		(c) 压力表型式 Pressure Gauge Type		(d) 安装型式 Mouting Type	
EAR1000	01	G1/8	空白 Blank	无压力表 Without Gauge	空白 Blank	不带支架 Without Bracket
EAR2000	02	G1/4				
EER3000	02	G1/4				
EAR3000	03	G3/8	S	GS-27 方形压力表/ Square	B	C型支架 C-Bracket
	02	G1/4				
EAR4000	03	G3/8	R1	GR-40 圆形压力表/ Round	B3	L型支架 L-Bracket
	04	G1/2				
	03	G3/8				
EAR5000	06	G3/4	空白 Blank R2	无压力表 Without Gauge GR-50 圆形压力表/ Round	B3	L型支架 L-Bracket
	06	G3/4				
	10	G1				

## Flow Diagrams

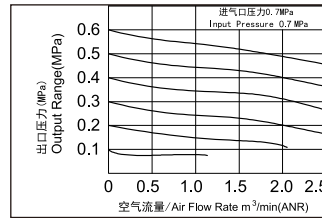
EAR1000-01



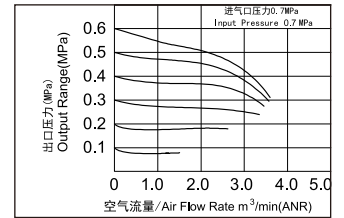
EAR2000-02



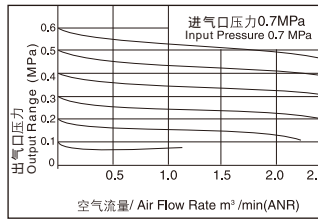
EER3000-02



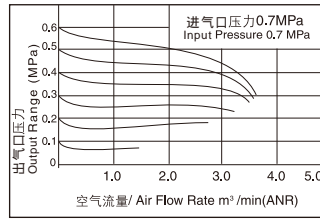
EER3000-03



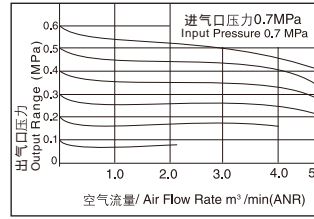
EAR3000-02



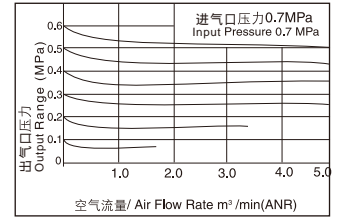
EAR3000-03



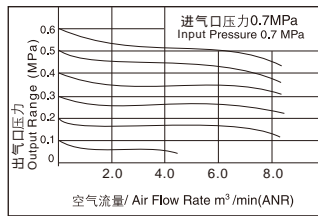
EAR4000-03



EAR4000-04



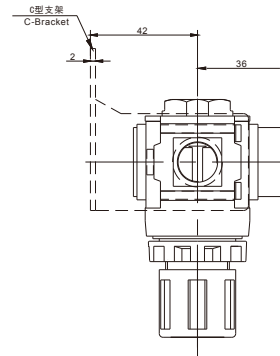
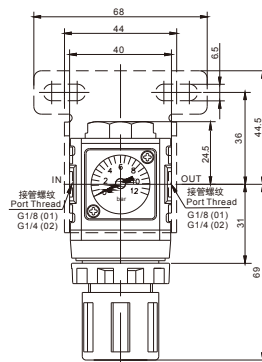
EAR5000-06/10



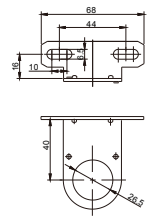
## Dimensions

EAR1000

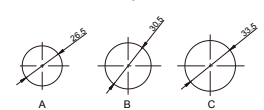
EAR2000



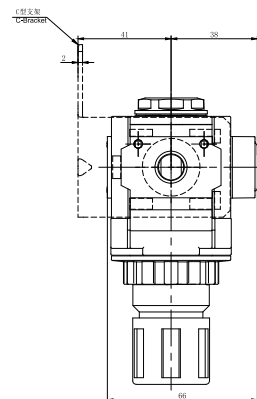
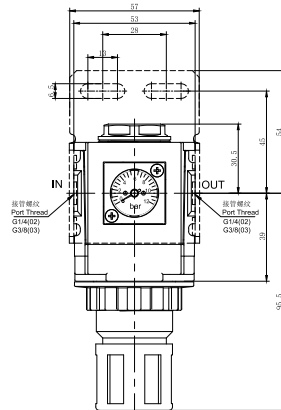
L型支架安装孔  
L-Bracket Mounting Hole



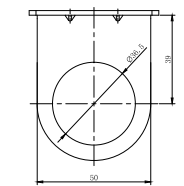
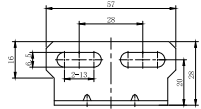
适用于面板安装孔  
Kneading board



EER3000

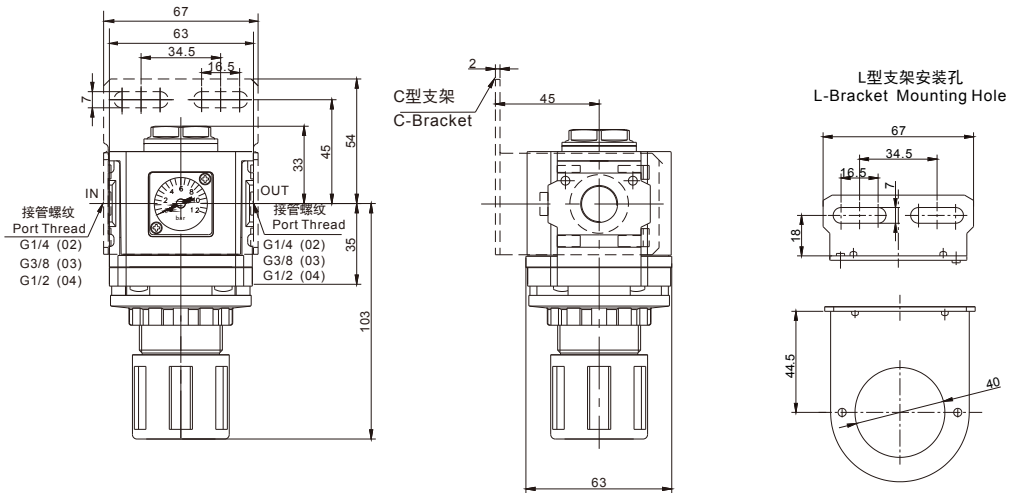


C型支架安装孔  
C-Bracket Mounting Hole

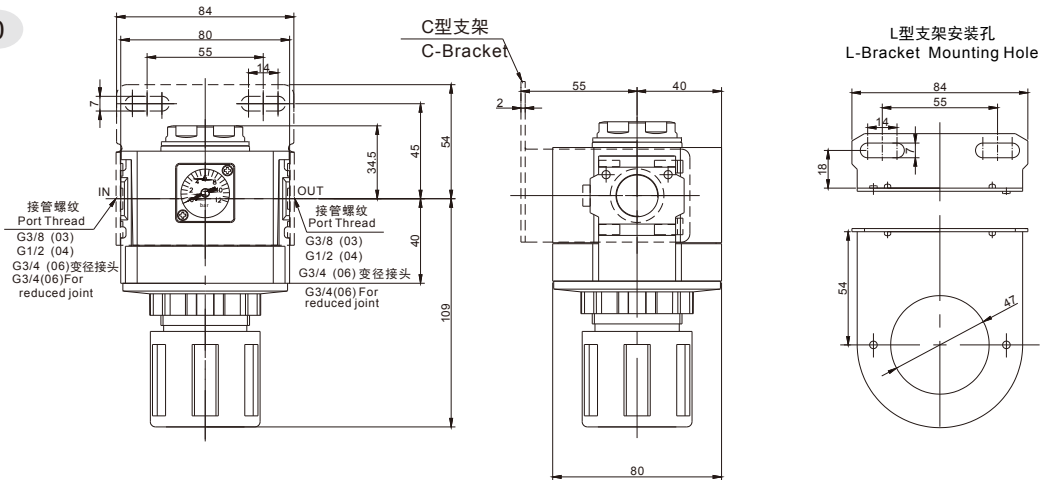


# Dimensions

## EAR3000



## EAR4000



## EAR5000

