

EAC Series FR+L



EAC1010/EAC2010



EEC3010



EAC3010



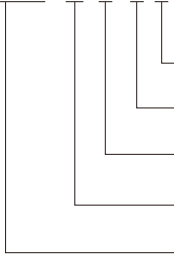
EAC4010



EAC5010

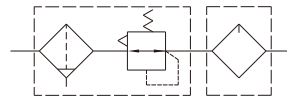
Product Code System

(a) - (b) - (c) (d) (e)
EAC3010 -03- E P1 S



压力表型式：方形压力表
Pressure Gauge Type : Gauge
过滤精度：5 μm聚乙烯(PE)
Filtration:5 μm(PE)
排水方式：无压排水
Drain:Semi-Auto
接管螺纹：G3/8
Port Thread:G3/8
型号/Model

Symbol



Specification

| 型号Model | EAC1010/EAC2010 | EEC3010 | EAC3010 | EAC4010 | EAC5010 |
|---|--|----------|---------------|--|---------|
| 最高使用压力/ Operating Pressure Mpa | 1.0 | | | | |
| 允许耐压力 / Max Pressure MPa | 1.5 | | | | |
| 使用温度 / Operating Temperature | 0-60 | | | | |
| 过滤精度/ Filtration μm | 5 或40/5 或40 | | | | |
| 设定压力范围/ Set Pressure MPa | 0.05-0.85 | | | | |
| 最少滴液流量/ Minimum Flow Oil Drop m ³ / min(ANR) | 0.015 | 0.03 | 0.03 | 0.065 | 0.19 |
| 溢流压力/ Overflow Pressure MPa | 设定压力/ Set Pressure + 0.05 | | | | |
| 储油量/ Max Oil Level ml | 20 | 40 | 85 | 170 | 140 |
| 废水储存容量 / Waste Bowl Capacity ml | 12 | 72 | 45 | 80 | 150 |
| 使用油 / Oil Recommended | 1级涡轮机油/ Turbine Oil NO.1(ISO VG 32) (不可使用锭子油/ NO Spindle oil is allowed) | | | | |
| 接管螺纹 / Port Thread G | 1/8、 1/4 | 1/4、 3/8 | 1/4、 3/8、 1/2 | 3/8、 1/2(3/4)配合接头规格 3/4 For reduced port | 3/4、 1 |

注意事项/ Caution

注：1、确认系统内没有承受压力之后，再拆卸杯子、杯子护罩；
2、最少滴液流量是指在设定压力为0.5MPa的基础上，每分钟5滴涡轮油的滴液流量
Note: 1.Assemble and disassemble the plastic bowl and bowl guard when it is confirmed that there's no load in control system.
2.The minimum drop flow refers to the drop flow of 5 turbine oil every minute on the basis of the pressure set at 0.5MPa

* At 0.7MPa supply pressure,0.5MPa set pressure,0.1 Mpa pressure drop

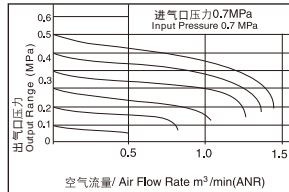
Filter Regulator+Lubricator

| (a) 型号 Model | (b) 接管螺纹 Port Thread | | (c) 排水方式 Drain | | (d) 过滤精度 Filtration | | (e) 压力表型式 Pressure Guage | |
|-----------------|-------------------------|------|-------------------|-------------------|------------------------|---------------------------|-----------------------------|---|
| | | | | | | | Blank | Gauge |
| EAC1010 | 01 | G1/8 | 空白 Blank | 手动排水 Manual | P1 | 5 μ m 聚乙烯 (PE) | 空白 Blank | 无压力表 Without Gauge |
| EAC2010 | 02 | G1/4 | | | | | | |
| EEC3010 | 02 | G1/4 | E | 无压排水 Semi-Auto | P2 | 5 μ m 烧结铜 (CU) | S | GS-27 方形压力表/Square |
| | 03 | G3/8 | | | | | | |
| EAC3010 | 02 | G1/4 | 空白 Blank | 手动排水 Manual | P3 | 40 μ m 聚乙烯 (PE) | R1 | GR-40 圆形压力表/Round |
| | 03 | G3/8 | | | | | | |
| EAC4010 | 04 | G1/2 | E | 无压排水 Semi-Auto | P4 | 40 μ m 烧结铜 (CU) | R1 | GR-40 圆形压力表/Round |
| | 03 | G3/8 | | | | | | |
| | 04 | G1/2 | | | | | | |
| EAC5010 | 06 | G3/4 | A | 自动排水 Auto | P4 | 40 μ m 烧结铜 (CU) | 空白 Blank | 无压力表 Without Gauge GR-50 圆形压力表/Round |
| | 06 | G3/4 | | | | | | |
| | 10 | G1 | | | | | | |

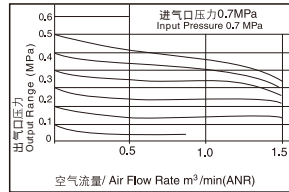
| (a) 型号 Model | (b) 接管螺纹 Port Thread | 组件/ Modular | | 最高使用压力 Operating Pressure (MPa) | 调压范围 Set Pressure (MPa) |
|-----------------|-------------------------|---------------------------|-------------------|------------------------------------|----------------------------|
| | | 过滤减压阀 Filter Regulator | 油雾器 Lubricator | | |
| EAC1010-01 | G1/8 | EAW1000-01 | EAL1000-01 | 1.0 | 0.05~0.85 |
| EAC2010-02 | G1/4 | EAW2000-02 | EAL2000-02 | | |
| EEC3010-02 | G1/4 | EEW3000-02 | EEL3000-02 | | |
| EEC3010-03 | G3/8 | EEW3000-03 | EEL3000-03 | | |
| EAC3010-02 | G1/4 | EAW3000-02 | EAL3000-02 | | |
| EAC3010-03 | G3/8 | EAW3000-03 | EAL3000-03 | | |
| EAC3010-04 | G1/2 | EAW3000-04 | EAL3000-04 | | |
| EAC4010-03 | G3/8 | EAW4000-03 | EAL4000-03 | | |
| EAC4010-04 | G1/2 | EAW4000-04 | EAL4000-04 | | |
| EAC4010-06 | G3/4 | EAW4000-06 | EAL4000-06 | | |
| EAC5010-06 | G3/4 | EAW5000-06 | EAL5000-06 | | |
| EAC5010-10 | G1 | EAW5000-10 | EAL5000-10 | | |

Flow Diagrams

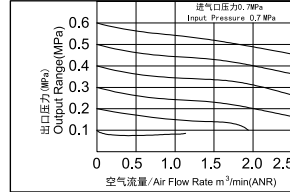
EAC1010-01



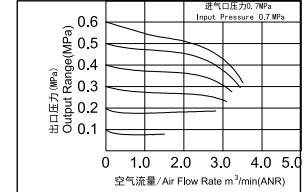
EAC2010-02



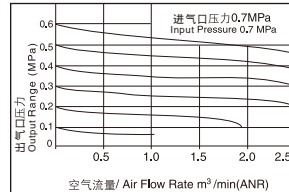
EEC3010-02



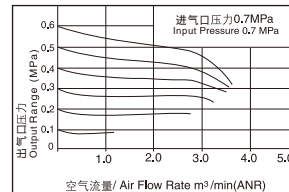
EEC3010-03



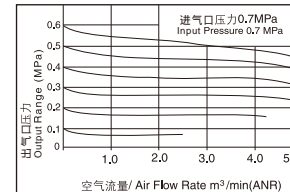
EAC3010-02



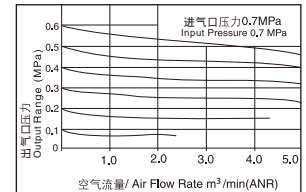
EAC3010-03



EAC4010-03



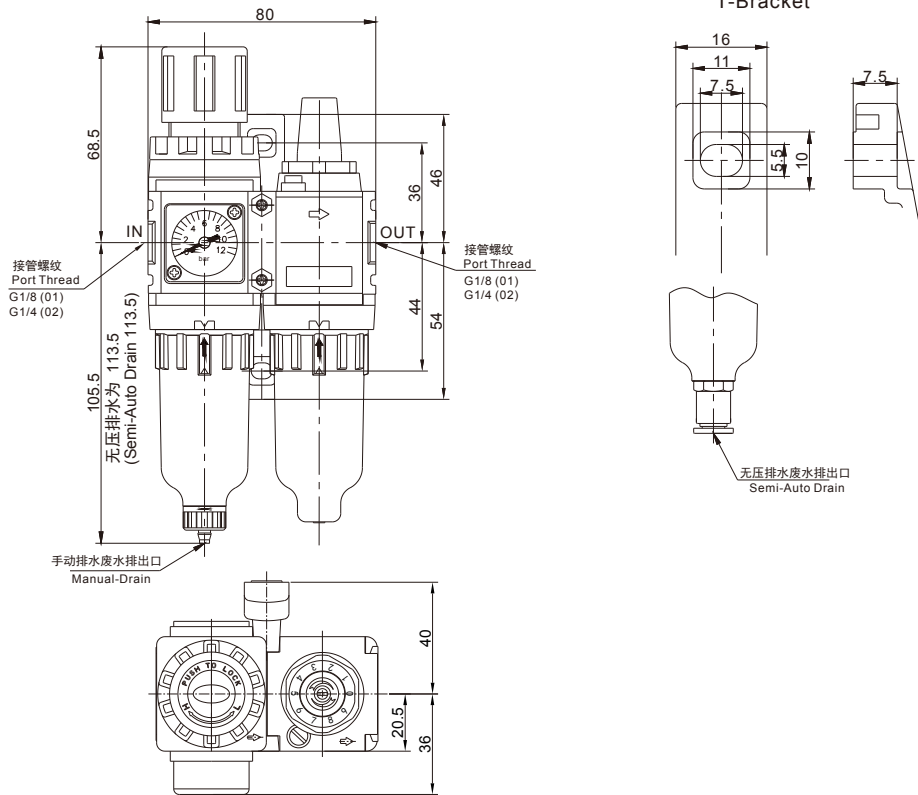
EAC4010-04



Dimensions

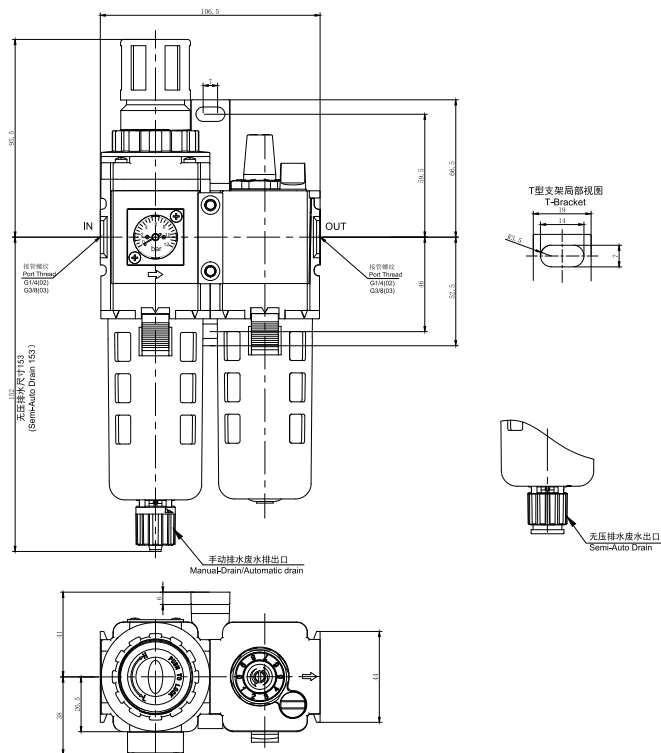
EAC1010

EAC2010



Note: Manual drain can insert ID 4 PU tube at drain outlet. Semi-Auto drain can insert OD 6PU tube at drain outlet.

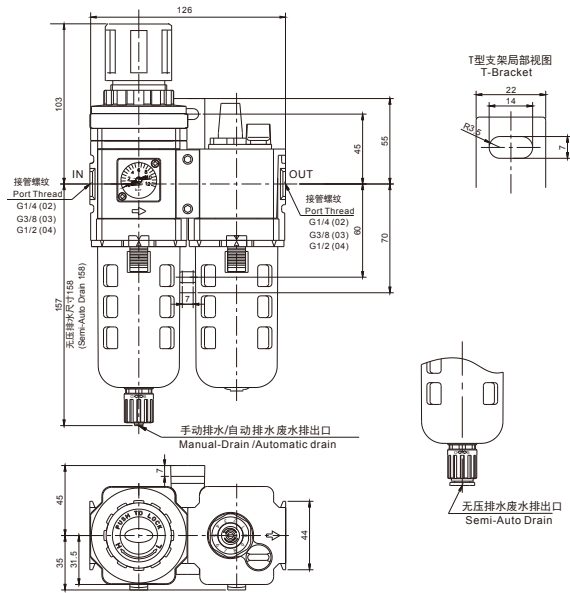
EEC3010



Note: Manual drain can insert ID 5.5 PU tube at drain outlet. Semi-Auto drain can insert OD 8PU tube at drain outlet.

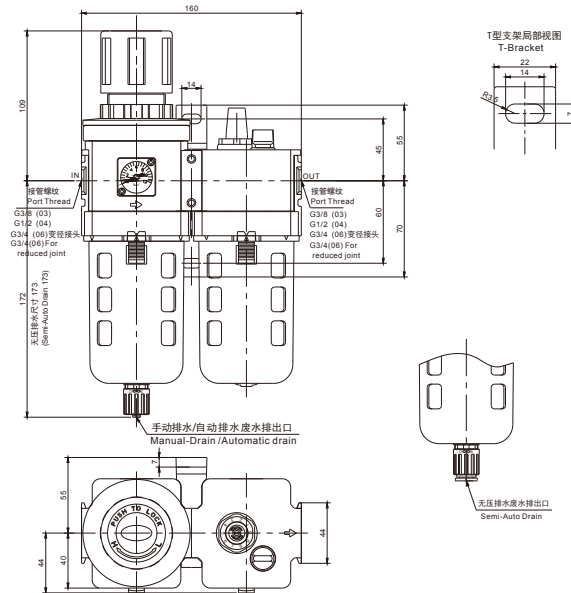
■ Dimensions

EAC3010



Note: Manual drain or automatic drain can insert ID 5.5 PU tube at drain outlet. Semi-Auto drain can insert OD 8PU tube at drain outlet.

EAC4010



Note: Manual drain or automatic drain can insert ID 5.5 PU tube at drain outlet. Semi-Auto drain can insert OD 8PU tube at drain outlet.

EAC5010

