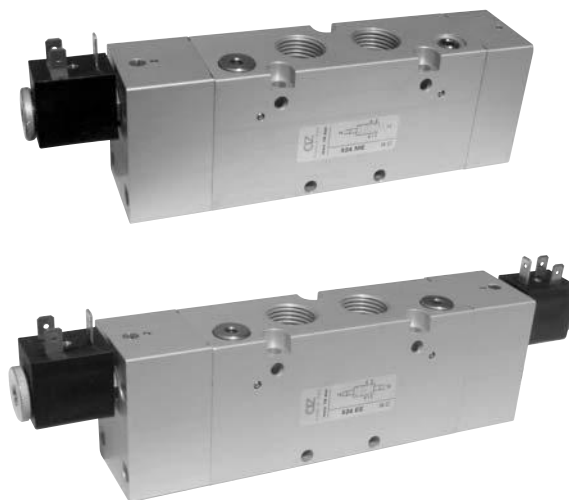


# valvole G1/2" azionamento elettropneumatico

*solenoid actuated valves - G1/2"*



- Valvole a spola 3/2-5/2-5/3 con attacchi filettati G1/2"  
*3/2-5/2-5/3 spool valves with G1/2" threaded ports*
- Elevatissima portata  
*Very high flow rate*
- Montaggio in linea  
*Installation in-line*
- Comandi elettrici con azionamento manuale bistabile  
*Solenoid pilots with detented manual override as standard*
- Multifunzionalità e adattabilità  
*Multifunction feature*



I prodotti di seguito indicati sono venduti senza bobine, da acquistarsi separatamente (vedi pag. 244).

*The following listed products are sold without coils, which are bought separately (refer to page 244).*

## Kit ricambi - spare parts

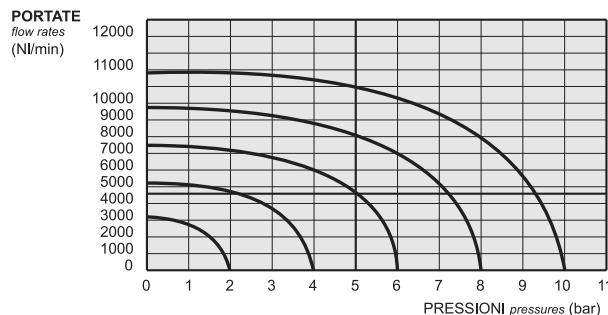
**02.030.2** : per valvole a 3/2 vie [for 3/2 way valves] ME - ME AS - MC

**02.031.2** : per valvole a 5/2 vie [for 5/2 way valves] ME - ME AS - MC

**02.032.2** : per valvole a 3/2 vie [for 3/2 way valves] EE - EE AS - CC

**02.033.2** : per valvole a 5/2 vie [for 5/2 way valves] EE - EE AS - CC

**02.034.2** : per valvole a 5/3 vie [for 5/3 way valves] EE - EE AS - CC



## Tempi di risposta - response times

|                                   |                                    |
|-----------------------------------|------------------------------------|
| monostabile<br><i>mono-stable</i> | TRA (14): 39 ms<br>TRR (12): 60 ms |
| bistabile<br><i>bi-stable</i>     | TRA (14): 90 ms<br>TRR (12): 90 ms |

## Materiali

**Corpo:** alluminio 11S

**Molle:** INOX

**Guarnizioni:** NBR

**Spola:** INOX

**Parti interne:** ottone OT58

## Materials

**Body:** aluminium 11S

**Springs:** stainless steel

**Seals:** NBR

**Spool:** stainless steel

**Internal parts:** brass OT58

|  |   |   |                                      |
|--|---|---|--------------------------------------|
| Diametro nominale<br><i>Nominal orifice</i>  |   | 13 mm   |                                      |
| Portata nominale a 6 bar, $\Delta p$ 1 bar<br><i>Nominal flow rate at 6 bar, <math>\Delta p</math> 1 bar</i> |   | 4600 NI/min                                       |                                      |
| Temperatura di esercizio<br><i>Temperature range</i>   |   | max +60°C   |                                      |
| Pressione di esercizio<br><i>Working pressure</i>  | al. interna monost. [monost. internal air supply]   | al. interna bist. [bi-stable internal air supply] | alim. separata [separate air supply] |
|  | 2.5 ... 10 bar<br>0.25 ... 1 MPa  | 1 ... 10 bar<br>0.1 ... 1 MPa                     | -0.9 ... 10 bar<br>-0.09 ... 1 MPa   |
| Pressione di azionamento (per alimentazione separata)<br><i>Actuating pressure (for separate air supply)</i> | monostabile [mono-stable]   |   | bistabile [bi-stable]                |
|  | 2.5 ... 10 bar<br>0.25 ... 1 MPa  |   | 1 ... 10 bar<br>0.1 ... 1 MPa        |
| Fluido<br><i>Fluid</i>   | Aria filtrata 50 $\mu$ con o senza lubrificazione<br><i>50<math>\mu</math> filtered, lubricated or non lubricated air</i> |   |                                      |

# valvole G1/2" azionamento elettropneumatico

*solenoid actuated valves - G1/2"*



## Multifunzionalità e adattabilità della valvola

La funzione della valvola può essere variata in ogni momento secondo necessità cambiando la posizione dei tappi da M5 e G1/8" collocati nel corpo secondo gli schemi sottoriportati.

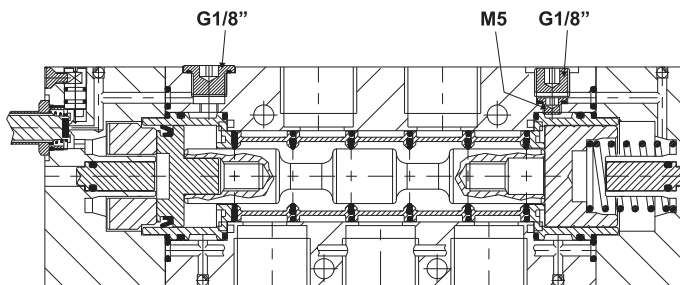
La valvola è fornita nella configurazione richiesta al momento dell'ordine. Eventuali tappi aggiuntivi possono essere ordinati separatamente.

## Multifunction feature of the valve

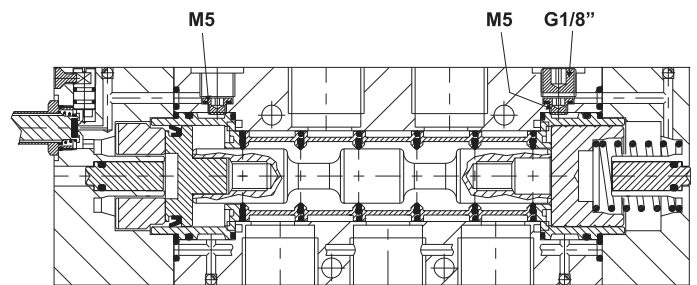
*The function of the valve can be changed in any moment. To do this it is enough to change the position of the plugs M5 and G1/8", which are inserted into the body according to the scheme.*

*The valve is supplied in the configuration specified on the order. More plugs can be ordered separately.*

**324 ME**  
**524 ME**

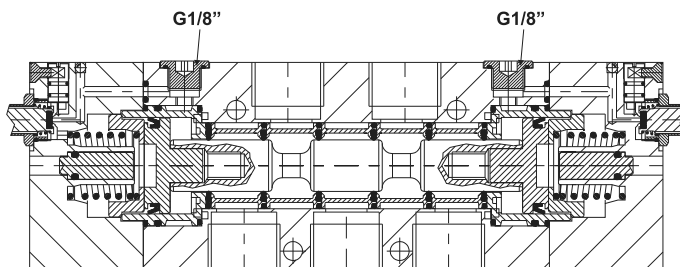


**324 ME AS**  
**524 ME AS**



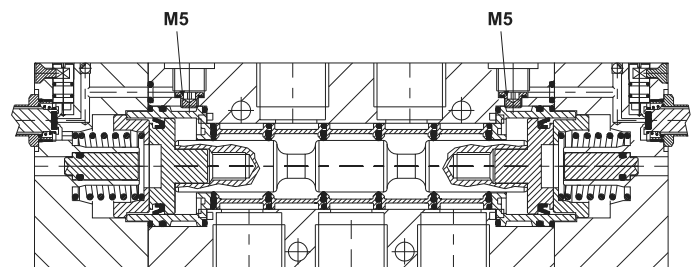
**324 EE**  
**524 EE**

**5243C EE**  
**5243A EE**  
**5243P EE**



**324 EE AS**  
**524 EE AS**

**5243C EE AS**  
**5243A EE AS**  
**5243P EE AS**



# valvole G1/2" azionamento elettropneumatico

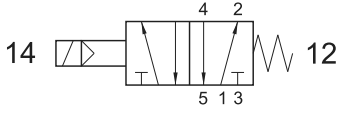
*solenoid actuated valves - G1/2"*



## 524 ME

5/2 1/2" comando elettrico - ritorno a molla

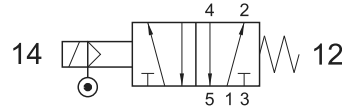
*5/2 1/2" solenoid pilot - spring return*



## 524 ME AS

5/2 1/2" comando elettrico alimentazione separata - ritorno a molla

*5/2 1/2" solenoid pilot with separate air supply - spring return*



## 524 EFP

5/2 1/2" comando elettrico - ritorno a molla pneumatica

*5/2 1/2" solenoid pilot - pneumatic spring return*

