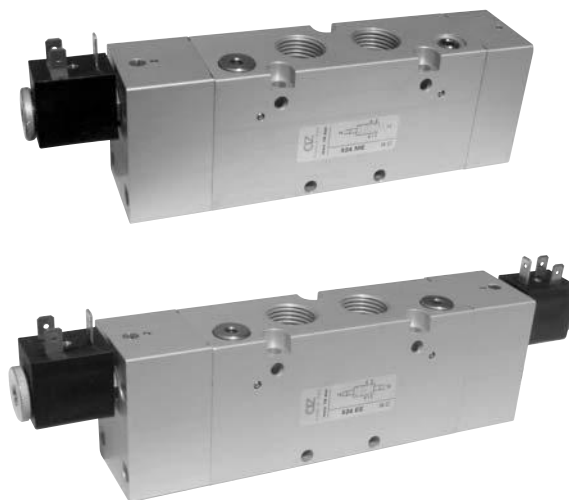


# valvole G1/2" azionamento elettropneumatico

*solenoid actuated valves - G1/2"*



- Valvole a spola 3/2-5/2-5/3 con attacchi filettati G1/2"  
*3/2-5/2-5/3 spool valves with G1/2" threaded ports*
- Elevatissima portata  
*Very high flow rate*
- Montaggio in linea  
*Installation in-line*
- Comandi elettrici con azionamento manuale bistabile  
*Solenoid pilots with detented manual override as standard*
- Multifunzionalità e adattabilità  
*Multifunction feature*



I prodotti di seguito indicati sono venduti senza bobine, da acquistarsi separatamente (vedi pag. 244).

*The following listed products are sold without coils, which are bought separately (refer to page 244).*

## Kit ricambi - spare parts

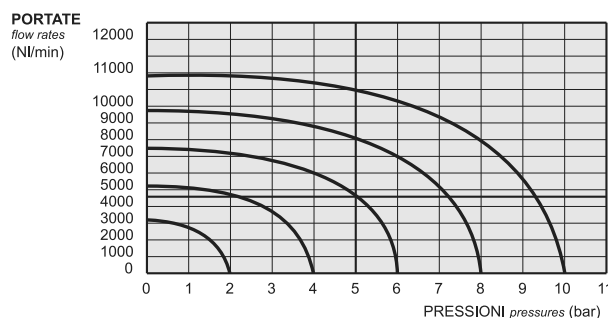
**02.030.2** : per valvole a 3/2 vie [for 3/2 way valves] ME - ME AS - MC

**02.031.2** : per valvole a 5/2 vie [for 5/2 way valves] ME - ME AS - MC

**02.032.2** : per valvole a 3/2 vie [for 3/2 way valves] EE - EE AS - CC

**02.033.2** : per valvole a 5/2 vie [for 5/2 way valves] EE - EE AS - CC

**02.034.2** : per valvole a 5/3 vie [for 5/3 way valves] EE - EE AS - CC



## Tempi di risposta - response times

monostabile <i>mono-stable</i>	TRA (14): 39 ms TRR (12): 60 ms
bistabile <i>bi-stable</i>	TRA (14): 90 ms TRR (12): 90 ms

## Materiali

**Corpo:** alluminio 11S

**Molle:** INOX

**Guarnizioni:** NBR

**Spola:** INOX

**Parti interne:** ottone OT58

## Materials

**Body:** aluminium 11S

**Springs:** stainless steel

**Seals:** NBR

**Spool:** stainless steel

**Internal parts:** brass OT58

Diametro nominale <i>Nominal orifice</i>		13 mm	
Portata nominale a 6 bar, Δp 1 bar <i>Nominal flow rate at 6 bar, Δp 1 bar</i>		4600 NI/min	
Temperatura di esercizio <i>Temperature range</i>		max +60°C	
Pressione di esercizio <i>Working pressure</i>	al. interna monost. [monost. internal air supply]	al. interna bist. [bi-stable internal air supply]	alim. separata [separate air supply]
	2.5 ... 10 bar 0.25 ... 1 MPa	1 ... 10 bar 0.1 ... 1 MPa	-0.9 ... 10 bar -0.09 ... 1 MPa
Pressione di azionamento (per alimentazione separata) <i>Actuating pressure (for separate air supply)</i>	monostabile [mono-stable]		bistabile [bi-stable]
	2.5 ... 10 bar 0.25 ... 1 MPa		1 ... 10 bar 0.1 ... 1 MPa
Fluido <i>Fluid</i>	Aria filtrata 50μ con o senza lubrificazione <i>50μ filtered, lubricated or non lubricated air</i>		

# valvole G1/2" azionamento elettropneumatico

solenoid actuated valves - G1/2"



## Multifunzionalità e adattabilità della valvola

La funzione della valvola può essere variata in ogni momento secondo necessità cambiando la posizione dei tappi da M5 e G1/8" collocati nel corpo secondo gli schemi sottoriportati.

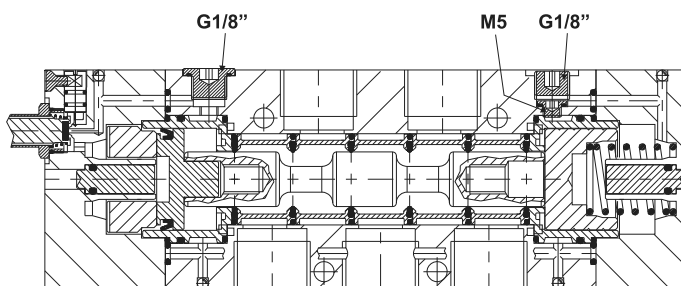
La valvola è fornita nella configurazione richiesta al momento dell'ordine. Eventuali tappi aggiuntivi possono essere ordinati separatamente.

## Multifunction feature of the valve

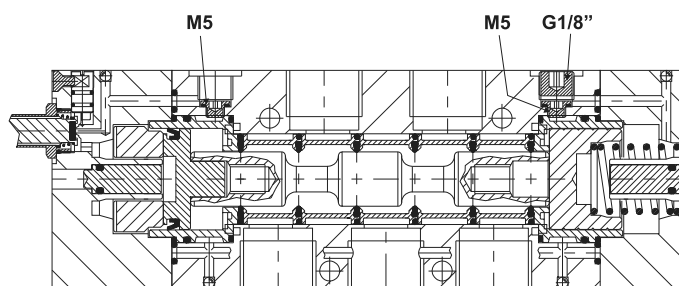
The function of the valve can be changed in any moment. To do this it is enough to change the position of the plugs M5 and G1/8", which are inserted into the body according to the scheme.

The valve is supplied in the configuration specified on the order. More plugs can be ordered separately.

**324 ME**  
**524 ME**

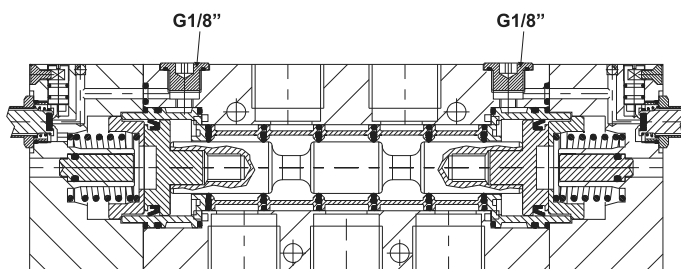


**324 ME AS**  
**524 ME AS**



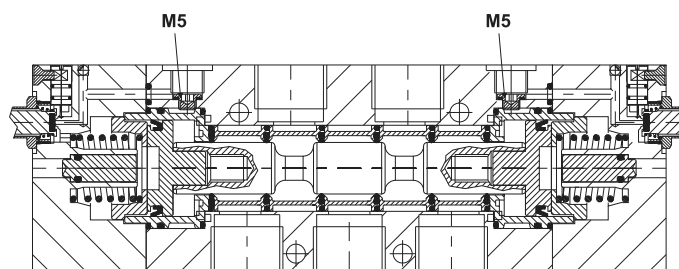
**324 EE**  
**524 EE**

**5243C EE**  
**5243A EE**  
**5243P EE**



**324 EE AS**  
**524 EE AS**

**5243C EE AS**  
**5243A EE AS**  
**5243P EE AS**



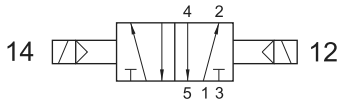
# valvole G1/2" azionamento elettropneumatico

*solenoid actuated valves - G1/2"*



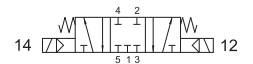
## 524 EE

5/2 1/2" doppio comando elettrico  
5/2 1/2" double solenoid pilot



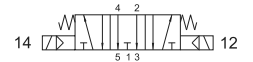
## 5243C EE

centri chiusi  
*closed centres*



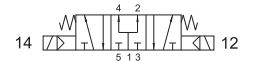
## 5243A EE

centri aperti  
*open centres*



## 5243P EE

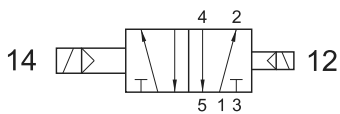
centri in pressione  
*pressurized centres*



5/3 1/2" doppio comando elettrico  
5/3 1/2" double solenoid pilot

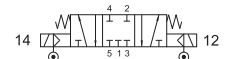
## 524 EED

5/2 1/2" doppio comando elettrico - con differenziale  
5/2 1/2" double solenoid pilot - with differential



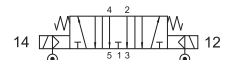
## 5243C EE AS

centri chiusi  
*closed centres*



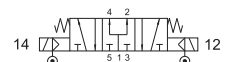
## 5243A EE AS

centri aperti  
*open centres*



## 5243P EE AS

centri in pressione  
*pressurized centres*



5/3 1/2" doppio comando elettrico alimentazione separata  
5/3 1/2" double solenoid pilot with separate air supply

## 524 EE AS

5/2 1/2" doppio comando elettrico alimentazione separata  
5/2 1/2" double solenoid pilot with separate air supply

