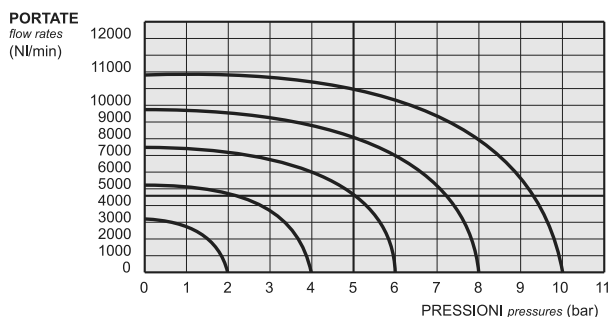


valvole G1/2" azionamento manuale

manually actuated valves - G1/2"



- Valvole a spola 3/2-5/2-5/3 con attacchi filettati G1/2"
3/2-5/2-5/3 spool valves with G1/2" threaded ports
- ELEVATISSIMA PORTATA
Very high flow rate
- Montaggio in linea
Installation in-line



Materiali

Corpo: alluminio 11S

Molle: INOX

Guarnizioni: NBR

Spola: alluminio nichelato

Parti interne: ottone OT58

Materials

Body: aluminium 11S

Springs: stainless steel

Seals: NBR

Spool: nickel plated aluminium

Internal parts: brass OT58

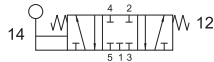
Diametro nominale <i>Nominal orifice</i>	13 mm
Portata nominale a 6 bar, Δp 1 bar <i>Nominal flow rate at 6 bar, Δp 1 bar</i>	4600 NI/min
Temperatura di esercizio <i>Temperature range</i>	max +60°C
Pressione di esercizio <i>Working pressure</i>	-0.9 ... 10 bar -0.09 ... 1 MPa
Fluido <i>Fluid</i>	Aria filtrata 50 μ con o senza lubrificazione <i>50μ filtered, lubricated or non lubricated air</i>

valvole G1/2" azionamento manuale

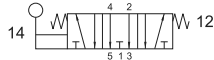
manually actuated valves - G1/2"



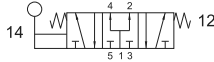
5243C ML90 centri chiusi
closed centres



5243A ML90 centri aperti
open centres



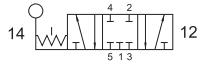
5243P ML90 centri in pressione
pressurized centres



5/3 1/2" leva 90° - ritorno al centro

5/3 1/2" 90° lever - spring return to centre

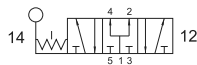
5243C LL90 centri chiusi
closed centres



5243A LL90 centri aperti
open centres



5243P LL90 centri in pressione
pressurized centres



5/3 1/2" leva 90° - tre posizioni stabili

5/3 1/2" 90° lever - three detented positions

