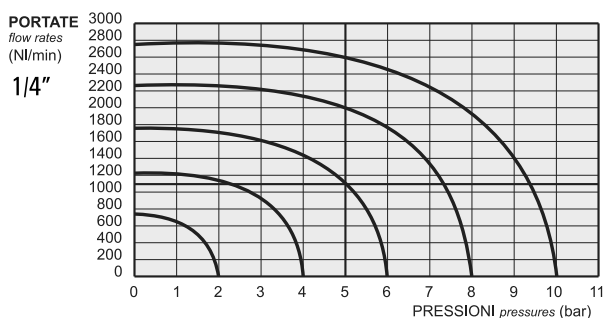
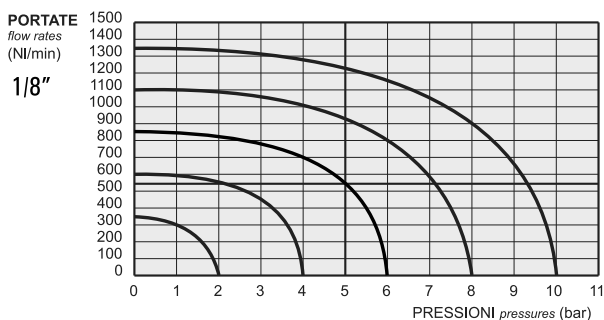


# valvole ad azionamento elettropneumatico

*solenoid actuated valves*



- Valvole a spola 3/2-5/2-5/3 con attacchi filettati G1/8"-G1/4"  
*3/2-5/2-5/3 spool valves with G1/8"-G1/4" threaded ports*
- Montaggio in linea, su collettori multipli o su basi manifold  
*Installation in-line, on gang or modular manifolds*
- Comandi elettrici con azionamento manuale bistabile  
*Solenoid pilots with detented manual override as standard*
- A richiesta versione a basso assorbimento 1.5W  
*On request with low consumption 1.5W*
- Esecuzioni speciali a richiesta  
*Special versions on request*



## Materiali

Corpo: alluminio 11S

Comando e fondello: tecnopolimero (\*)

Molle: INOX

Guarnizioni: NBR

Spola: alluminio nichelato

Parti interne: ottone OT58

## Materials

Body: aluminium 11S

End caps: technopolymer (\*)

Springs: stainless steel

Seals: NBR

Spool: nickel plated aluminium

Internal parts: brass OT58

(\*) Su richiesta e dietro supplemento di prezzo, le valvole sono fornibili con corpo, comando e fondello interamente in alluminio. Alcune valvole, come di seguito specificato, sono disponibili solo nella versione in alluminio. Le valvole ATEX sono solo in alluminio.

Le parti in tecnopolimero recano impresso il logo

(\*) On request and upon extra charge, the valves are available also with body and end caps entirely in aluminium. Some valves, as specified in the next pages, are available only in the aluminium version. ATEX valves are only in aluminium.

The parts in technopolymer are marked with the logo

## Tempi di risposta - response times

	1/8"	1/4"
monostabile <i>mono-stable</i>	TRA (14): 15 ms TRR (12): 35 ms	TRA (14): 19 ms TRR (12): 45 ms
bistabile <i>bi-stable</i>	TRA (14): 20 ms TRR (12): 20 ms	TRA (14): 22 ms TRR (12): 22 ms

I prodotti di seguito indicati sono venduti senza bobine, da acquistarsi separatamente (vedi pag. 209).  
*The following listed products are sold without coils, which are bought separately (refer to page 209).*

Diametro nominale <i>Nominal orifice</i>	1/8": 5 mm 1/4": 7.5 mm		
Temperatura di esercizio <i>Temperature range</i>	max +60°C		
Pressione di esercizio <i>Working pressure</i>	al. interna monost. [monost. internal air supply]	al. interna bist. [bi-stable internal air supply]	alim. separata [separate air supply]
	2.5 ... 10 bar 0.25 ... 1 MPa	1 ... 10 bar 0.1 ... 1 MPa	-0.9 ... 10 bar -0.09 ... 1 MPa
Pressione di azionamento (per alimentazione separata) <i>Actuating pressure (for separate air supply)</i>	monostabile [mono-stable]		bistabile [bi-stable]
	2.5 ... 10 bar 0.25 ... 1 MPa		1 ... 10 bar 0.1 ... 1 MPa
Fluido <i>Fluid</i>	Aria filtrata 50µ con o senza lubrificazione <i>50µ filtered, lubricated or non lubricated air</i>		

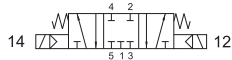
# valvole ad azionamento elettropneumatico

*solenoid actuated valves*



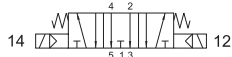
**5223C EE**

centri chiusi  
*closed centres*



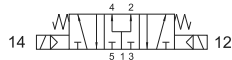
**5223A EE**

centri aperti  
*open centres*



**5223P EE**

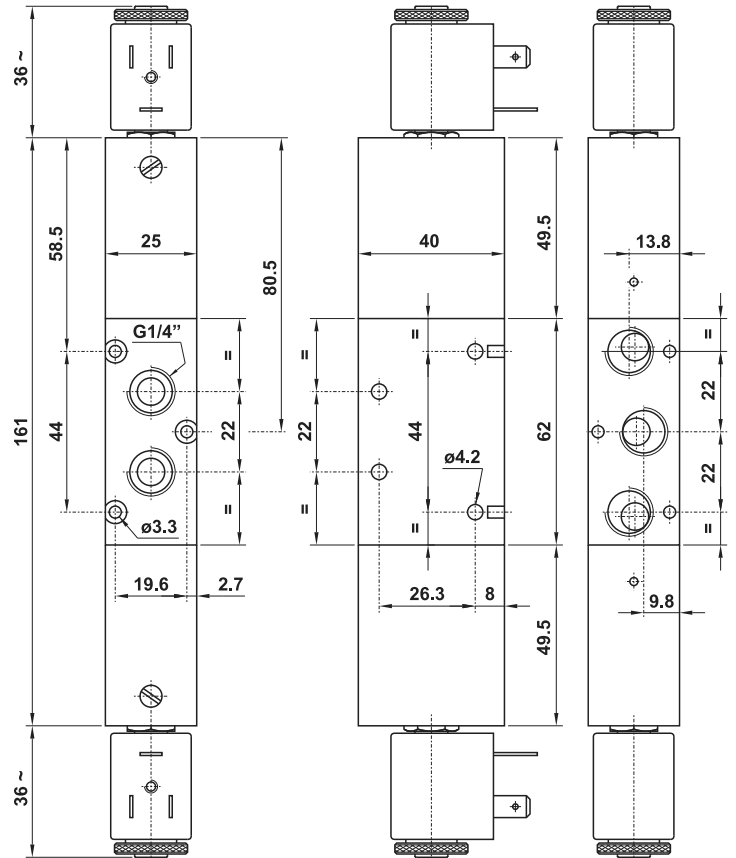
centri in pressione  
*pressurized centres*



5/3 1/4" doppio comando elettrico

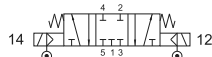
*5/3 1/4" double solenoid pilot*

SOLO VERSIONE IN ALLUMINIO  
*ONLY ALUMINIUM VERSION*



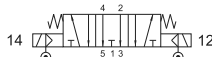
**5223C EE AS**

centri chiusi  
*closed centres*



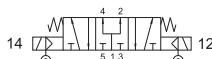
**5223A EE AS**

centri aperti  
*open centres*



**5223P EE AS**

centri in pressione  
*pressurized centres*



5/3 1/4" doppio comando elettrico alimentazione separata

*5/3 1/4" double solenoid pilot with separate air supply*

SOLO VERSIONE IN ALLUMINIO  
*ONLY ALUMINIUM VERSION*

