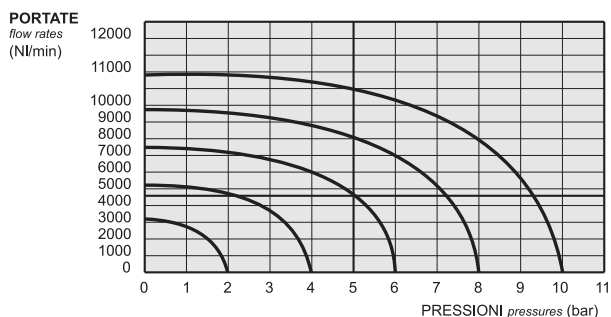


# valvole G1/2" azionamento manuale

manually actuated valves - G1/2"



- Valvole a spola 3/2-5/2-5/3 con attacchi filettati G1/2"  
*3/2-5/2-5/3 spool valves with G1/2" threaded ports*
- Elevatissima portata  
*Very high flow rate*
- Montaggio in linea  
*Installation in-line*



## Materiali

**Corpo:** alluminio 11S

**Molle:** INOX

**Guarnizioni:** NBR

**Spola:** alluminio nichelato

**Parti interne:** ottone OT58

## Materials

**Body:** aluminium 11S

**Springs:** stainless steel

**Seals:** NBR

**Spool:** nickel plated aluminium

**Internal parts:** brass OT58

Diametro nominale <i>Nominal orifice</i>	13 mm
Portata nominale a 6 bar, $\Delta p$ 1 bar <i>Nominal flow rate at 6 bar, <math>\Delta p</math> 1 bar</i>	4600 NI/min
Temperatura di esercizio <i>Temperature range</i>	max +60°C
Pressione di esercizio <i>Working pressure</i>	-0.9 ... 10 bar -0.09 ... 1 MPa
Fluido <i>Fluid</i>	Aria filtrata 50 $\mu$ con o senza lubrificazione <i>50<math>\mu</math> filtered, lubricated or non lubricated air</i>

# valvole G1/2" azionamento manuale

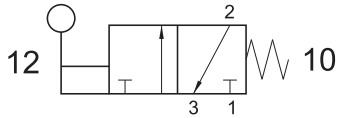
manually actuated valves - G1/2"



## 324 ML90

3/2 1/2" leva 90° - ritorno a molla

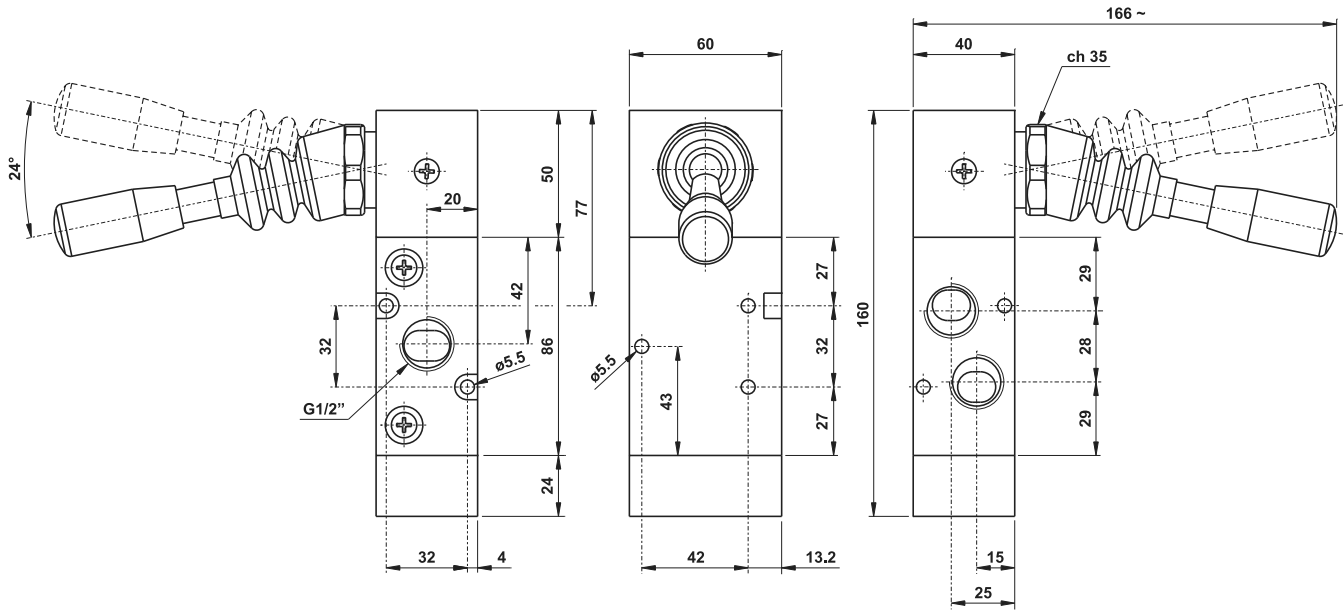
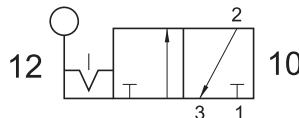
3/2 1/2" 90° lever - spring return



## 324 LL90

3/2 1/2" leva 90° bistabile

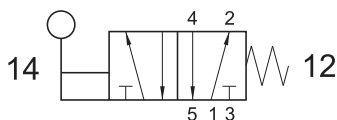
3/2 1/2" 90° bi-stable lever



## 524 ML90

5/2 1/2" leva 90° - ritorno a molla

5/2 1/2" 90° lever - spring return



## 524 LL90

5/2 1/2" leva 90° bistabile

5/2 1/2" 90° bi-stable lever

