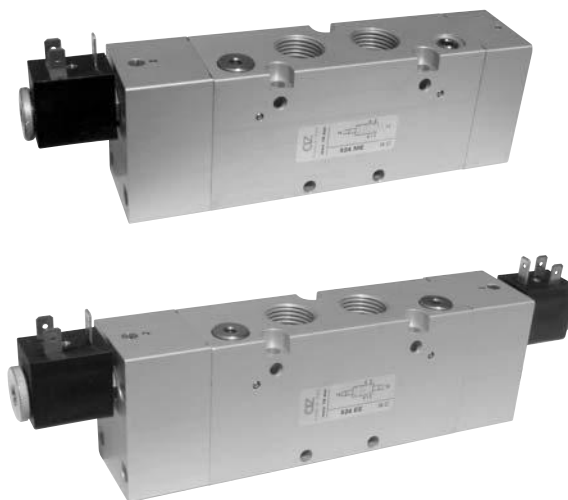


valvole G1/2" azionamento elettropneumatico

solenoid actuated valves - G1/2"



- Valvole a spola 3/2-5/2-5/3 con attacchi filettati G1/2"
3/2-5/2-5/3 spool valves with G1/2" threaded ports
- Elevatissima portata
Very high flow rate
- Montaggio in linea
Installation in-line
- Comandi elettrici con azionamento manuale bistabile
Solenoid pilots with detented manual override as standard
- Multifunzionalità e adattabilità
Multifunction feature



I prodotti di seguito indicati sono venduti senza bobine, da acquistarsi separatamente (vedi pag. 244).

The following listed products are sold without coils, which are bought separately (refer to page 244).

Kit ricambi - spare parts

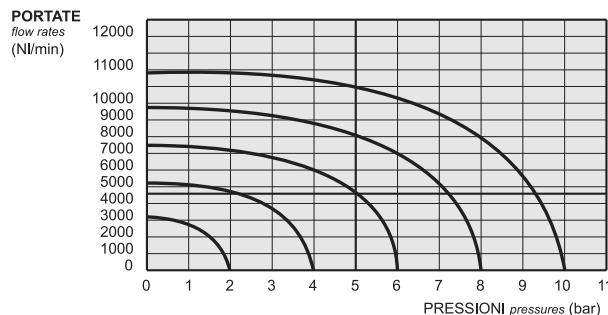
02.030.2 : per valvole a 3/2 vie [for 3/2 way valves] ME - ME AS - MC

02.031.2 : per valvole a 5/2 vie [for 5/2 way valves] ME - ME AS - MC

02.032.2 : per valvole a 3/2 vie [for 3/2 way valves] EE - EE AS - CC

02.033.2 : per valvole a 5/2 vie [for 5/2 way valves] EE - EE AS - CC

02.034.2 : per valvole a 5/3 vie [for 5/3 way valves] EE - EE AS - CC



Tempi di risposta - response times

monostabile <i>mono-stable</i>	TRA (14): 39 ms TRR (12): 60 ms
bistabile <i>bi-stable</i>	TRA (14): 90 ms TRR (12): 90 ms

Materiali

Corpo: alluminio 11S

Molle: INOX

Guarnizioni: NBR

Spola: INOX

Parti interne: ottone OT58

Materials

Body: aluminium 11S

Springs: stainless steel

Seals: NBR

Spool: stainless steel

Internal parts: brass OT58

Diametro nominale <i>Nominal orifice</i>		13 mm	
Portata nominale a 6 bar, Δp 1 bar <i>Nominal flow rate at 6 bar, Δp 1 bar</i>		4600 NI/min	
Temperatura di esercizio <i>Temperature range</i>		max +60°C	
Pressione di esercizio <i>Working pressure</i>	al. interna monost. [monost. internal air supply]	al. interna bist. [bi-stable internal air supply]	alim. separata [separate air supply]
	2.5 ... 10 bar 0.25 ... 1 MPa	1 ... 10 bar 0.1 ... 1 MPa	-0.9 ... 10 bar -0.09 ... 1 MPa
Pressione di azionamento (per alimentazione separata) <i>Actuating pressure (for separate air supply)</i>	monostabile [mono-stable]		bistabile [bi-stable]
	2.5 ... 10 bar 0.25 ... 1 MPa		1 ... 10 bar 0.1 ... 1 MPa
Fluido <i>Fluid</i>	Aria filtrata 50μ con o senza lubrificazione <i>50μ filtered, lubricated or non lubricated air</i>		

valvole G1/2" azionamento elettropneumatico

solenoid actuated valves - G1/2"



Multifunzionalità e adattabilità della valvola

La funzione della valvola può essere variata in ogni momento secondo necessità cambiando la posizione dei tappi da M5 e G1/8" collocati nel corpo secondo gli schemi sottoriportati.

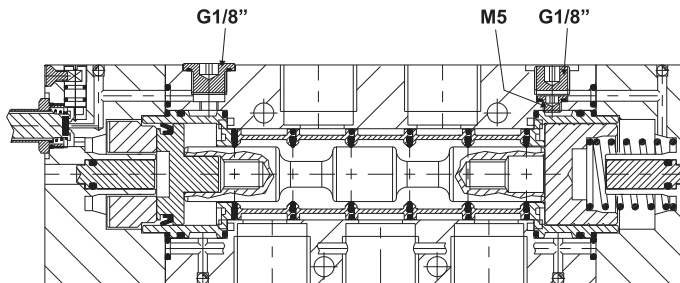
La valvola è fornita nella configurazione richiesta al momento dell'ordine. Eventuali tappi aggiuntivi possono essere ordinati separatamente.

Multifunction feature of the valve

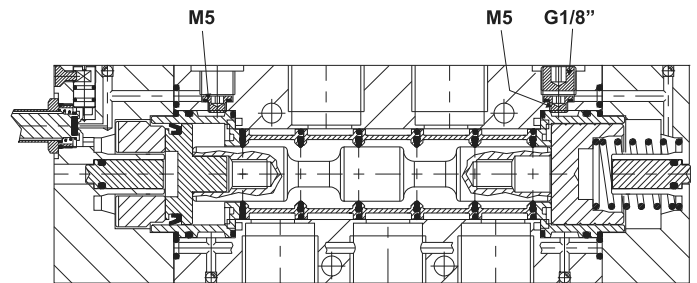
The function of the valve can be changed in any moment. To do this it is enough to change the position of the plugs M5 and G1/8", which are inserted into the body according to the scheme.

The valve is supplied in the configuration specified on the order. More plugs can be ordered separately.

324 ME
524 ME

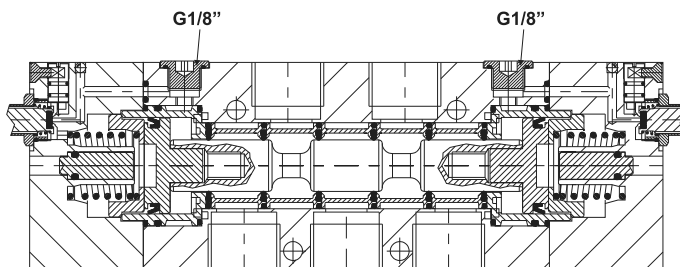


324 ME AS
524 ME AS



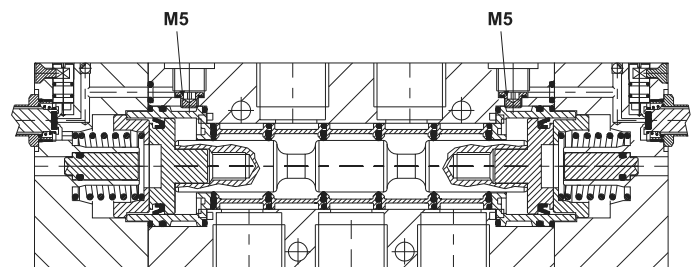
324 EE
524 EE

5243C EE
5243A EE
5243P EE



324 EE AS
524 EE AS

5243C EE AS
5243A EE AS
5243P EE AS



valvole G1/2" azionamento elettropneumatico

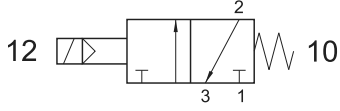
solenoid actuated valves - G1/2"



324 ME

3/2 1/2" NC comando elettrico - ritorno a molla

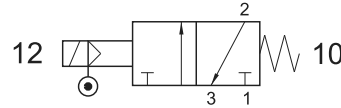
3/2 1/2" NC solenoid pilot - spring return



324 ME AS

3/2 1/2" comando elettrico alimentazione separata - ritorno a molla

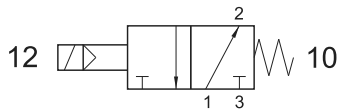
3/2 1/2" solenoid pilot with separate air supply - spring return



324 MEA

3/2 1/2" NA comando elettrico - ritorno a molla

3/2 1/2" NO solenoid pilot - spring return



324 EFP

3/2 1/2" NC comando elettrico - ritorno a molla pneumatica

3/2 1/2" NC solenoid pilot - pneumatic spring return

