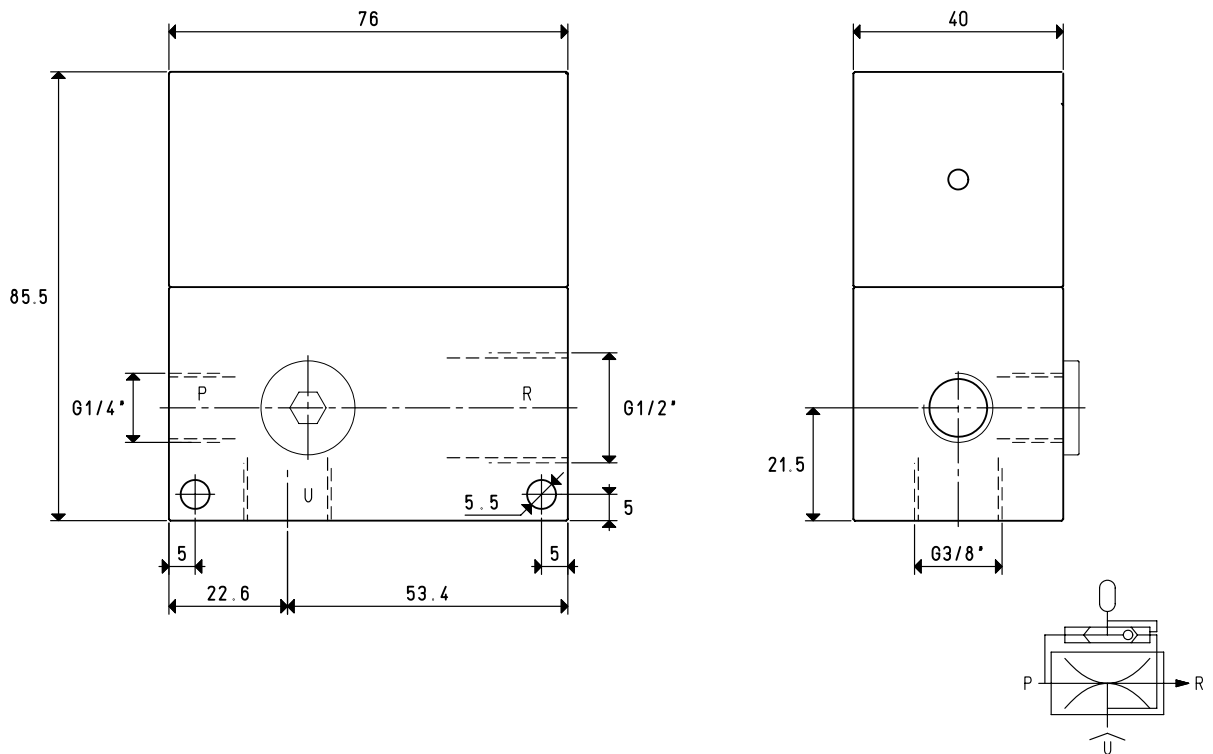


SINGLE-STAGE VACUUM GENERATOR WITH EJECTOR 15 04 10



3D drawings are available on vuototecnica.net



P=COMPRESSED AIR CONNECTION R=EXHAUST U=VACUUM CONNECTION

| Item | | 15 04 10 | | |
|--|-------------------|-----------------|-----|-----------|
| Intake air flow rate | m ³ /h | 4.8 | 5 | 5 |
| Maximum level of vacuum | -KPa | 62 | 78 | 85 |
| Final pressure | mbar abs. | 380 | 220 | 150 |
| Supply pressure | bar | 4 | 5 | 6 |
| Optimal supply pressure | bar | | | 6 |
| Air consumption | NI/s | 1.1 | 1.3 | 1.6 |
| Operating temperature | °C | | | -20 / +80 |
| Noise level at optimal supply pressure | dB(A) | | | 79 |
| Weight | g | | | 501 |
| Spare parts | | 15 04 10 | | |
| Sealing kit | item | | | 00 15 501 |

Note: All vacuum values indicated in the table are valid at the normal atmospheric pressure of 1013 mbar and obtained with a constant supply pressure.

Vacuum generator supply must be carried out with non-lubricated compressed air, 5 micron filtration, in accordance with standard ISO 8573-1 class 4.

Transformation ratio: N (newton) = Kg x 9.81 (force of gravity)

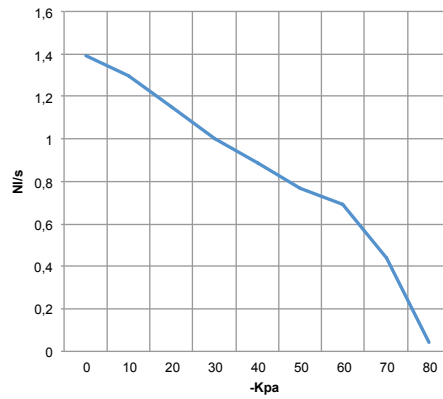
inch = $\frac{\text{mm}}{25.4}$; pounds = $\frac{\text{g}}{453.6} = \frac{\text{Kg}}{0.4536}$

Adapters for GAS - NPT threading available on page 1.130



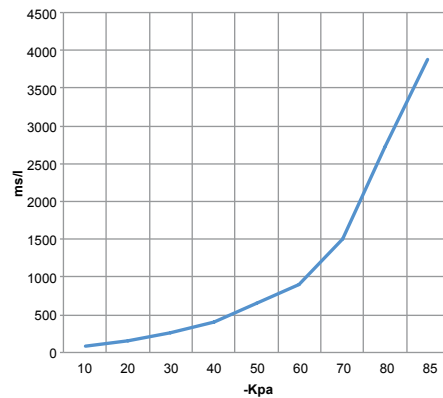
SINGLE-STAGE VACUUM GENERATOR WITH EJECTOR 15 04 10

Air flow rate (NI/s) at different level of vacuum (-KPa) at optimal supply pressure



| Generator item | Supp. press. bar | Air consumption NI/s | Air flow rate (NI/s) at different levels of vacuums (-KPa) at optimal supply pressure | | | | | | | | | | Max vacuum -KPa |
|----------------|------------------|----------------------|---|------|------|------|------|------|------|------|------|----|-----------------|
| | | | 0 | 10 | 20 | 30 | 40 | 50 | 60 | 70 | 80 | | |
| 15 04 10 | 6.0 | 1.6 | 1.39 | 1.30 | 1.15 | 1.00 | 0.89 | 0.77 | 0.69 | 0.44 | 0.04 | 85 | |

Evacuation rates (ms/l = s/m³) at different levels of vacuums (-KPa) at optimal supply pressure



| Generator item | Supp. press. bar | Air consumption NI/s | Evacuation rates (ms/l = s/m³) at different levels of vacuums (-KPa) at optimal supply pressure | | | | | | | | Max vacuum -KPa | |
|----------------|------------------|----------------------|---|-----|-----|-----|-----|-----|------|------|-----------------|----|
| | | | 10 | 20 | 30 | 40 | 50 | 60 | 70 | 80 | | 85 |
| 15 04 10 | 6.0 | 1.6 | 77 | 154 | 261 | 403 | 649 | 902 | 1506 | 2730 | 3876 | 85 |

ACCESSORIES UPON REQUEST

Silencer item SSX 1/2"

